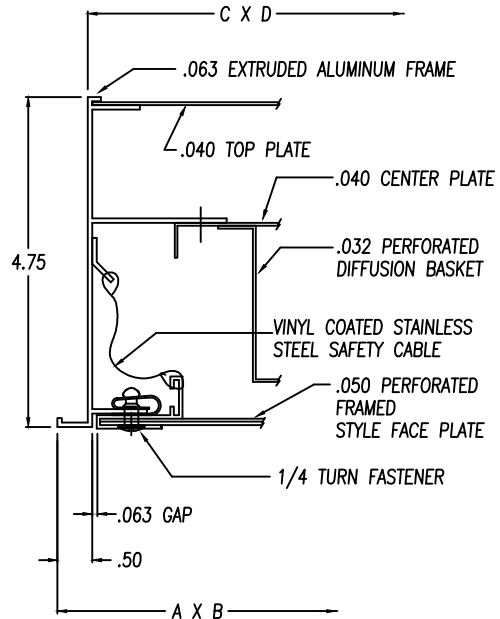
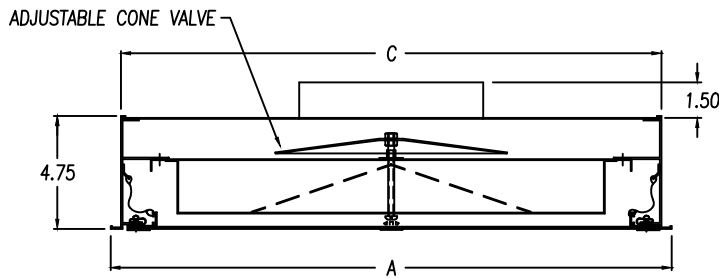
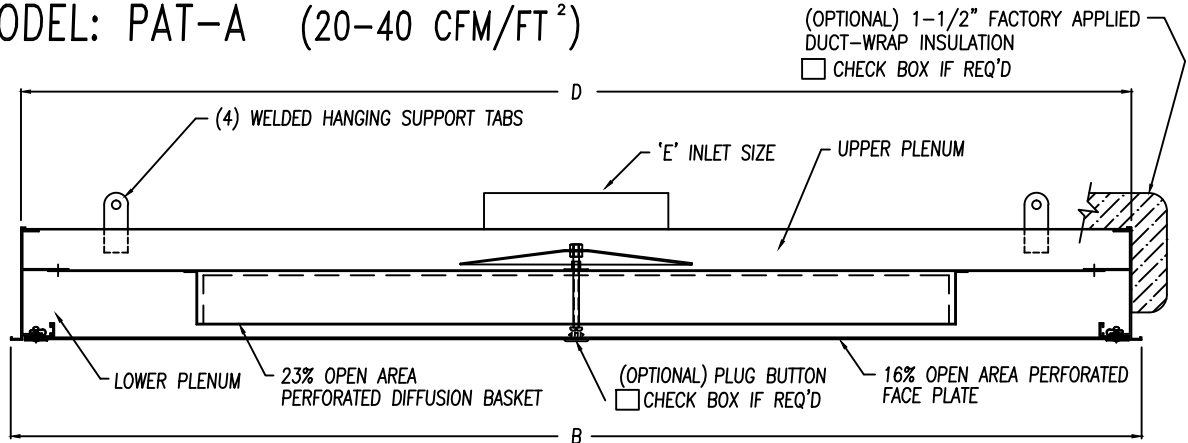


LAMI-VENT™

MODEL: PAT-A (20-40 CFM/FT²)



MODULE DIMENSIONS (in.)						
MODEL	'A'	'B'	'C'	'D'	'E'	QNTY.
PAT-1212-A	11.500	11.500	10.625	10.625	Ø5.75	
PAT-1224-A	11.500	23.625	10.625	22.750	Ø5.75	
PAT-1236-A	11.500	35.750	10.625	34.875	Ø5.75	
PAT-1248-A	11.500	47.875	10.625	47.000	Ø5.75	
PAT-1260-A	11.500	60.000	10.625	59.125	Ø7.75	
PAT-1272-A	11.500	72.125	10.625	71.250	Ø7.75	
PAT-2424-A	23.625	23.625	22.750	22.750	Ø7.75	
					Ø9.75	
PAT-2436-A	23.625	35.750	22.750	34.875	Ø7.75	
					Ø9.75	
PAT-2448-A	23.625	47.875	22.750	47.000	Ø7.75	
					Ø9.75	
					Ø11.75	
PAT-2460-A	23.625	60.000	22.750	59.125	Ø9.75	
PAT-2472-A	23.625	72.125	22.750	71.250	Ø9.75	
PAT-3636-A	35.750	35.750	34.875	34.875	Ø9.75	
PAT-3648-A	35.750	47.875	34.875	47.000	Ø9.75	
PAT-3660-A	35.750	60.000	34.875	59.125	Ø11.75	

NOTES:

- INDICATE FACEPLATE STYLE:
 F = FRAMED * W = WRAP-AROUND
 * NOT OFFERED IN STAINLESS STEEL
- INDICATE MATERIAL / FINISH:
 0 = ALUMINUM / WHITE BAKED ENAMEL
 1 = ALUMINUM / CLEAR ANODIZED
 2 = ALUMINUM / CLEAR ANODIZED WITH 304 SST FACEPLATE / No. 4 POLISH
 3 = 304 STAINLESS STEEL / No. 4 POLISH ON ROOM-SIDE SURFACES
 4 = ALUMINUM DIFFUSER / WHITE BAKED ENAMEL WITH 304 SST FACEPLATE / No. 4 POLISH
- ALL DIMENSIONS SHOWN IN INCHES.

FORM 4-120, EFFECTIVE 10/2018

JOB: _____
 ENGINEER: _____
 ARCHITECT: _____
 CONTRACTOR: _____

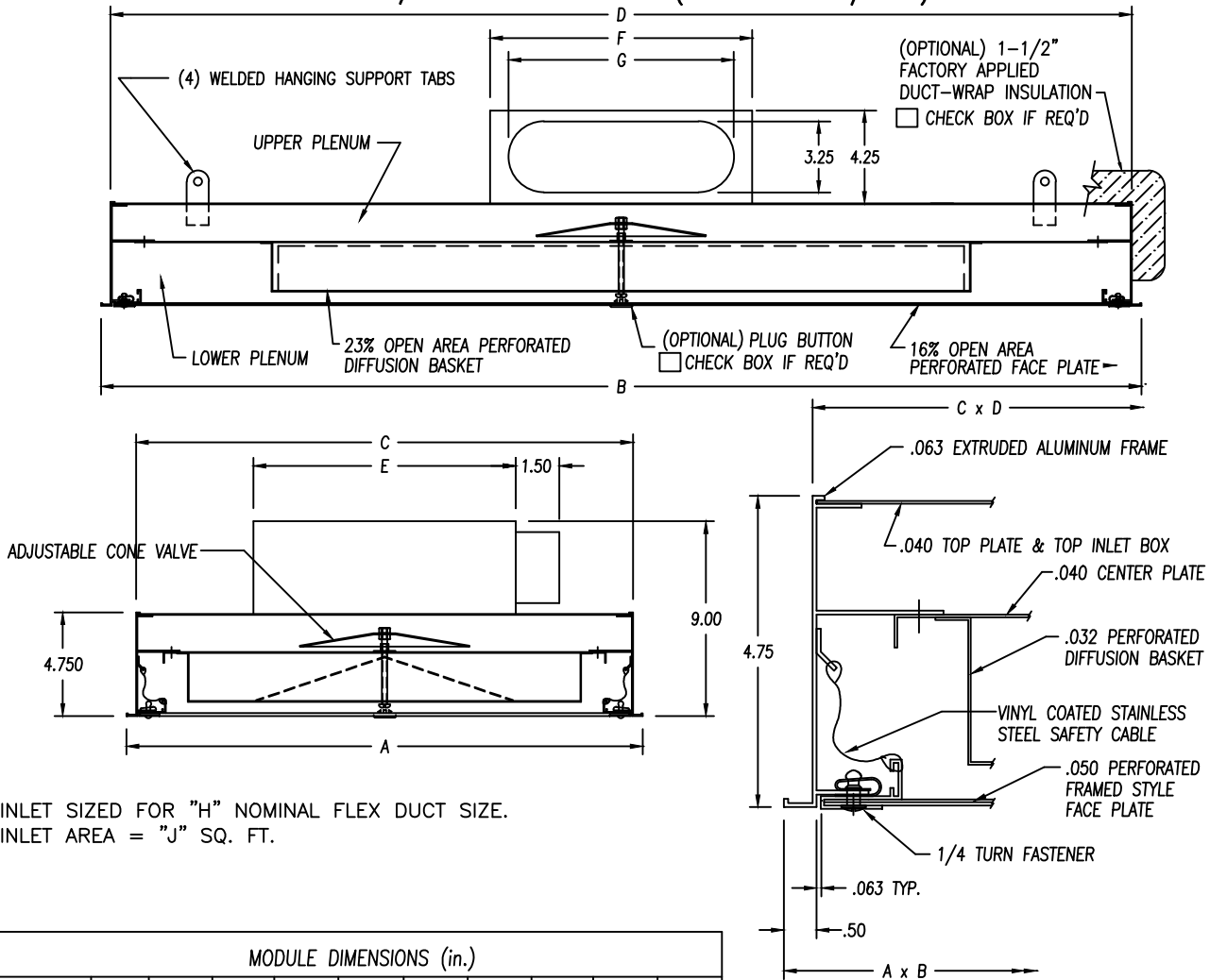


PHONE: 1-800-404-0931 www.precisionairproducts.com

THE ITEMS SHOWN ON THIS DRAWING MAY BE COVERED BY ONE OR MORE PATENTS OF PRECISION AIR PRODUCTS CO. THE DESIGN AND DRAWING ARE THE PROPERTY OF THE CORPORATION AND DUPLICATION IS NOT PERMITTED, EXCEPT WITH WRITTEN CONSENT FROM THE CORPORATION. DIMENSIONS SHOWN ARE SUBJECT TO NORMAL MANUFACTURING TOLERANCES. THIS DRAWING IS FOR SUBMITTAL PURPOSES ONLY AND SUBJECT TO REVISION.

LAMI-VENT™

MODEL: PAT-A W/ SIDE INLET (20-40 CFM/FT²)



INLET SIZED FOR "H" NOMINAL FLEX DUCT SIZE.
INLET AREA = "J" SQ. FT.

MODULE DIMENSIONS (in.)										
MODEL	'A'	'B'	'C'	'D'	'E'	'F'	'G'	'H'	'J'	QNTY.
PAT-1212-A	11.500	11.500	10.625	10.625	9.00	9.00	7.188	6	0.1465	
PAT-1224-A	11.500	23.625	10.625	22.750	9.00	9.00	7.188	6	0.1465	
PAT-1236-A	11.500	35.750	10.625	34.875	9.00	12.00	10.313	8	0.2170	
PAT-1248-A	11.500	47.875	10.625	47.000	9.00	12.00	10.313	8	0.2170	
PAT-2424-A	23.625	23.625	22.750	22.750	12.00	12.00	10.313	8	0.2170	
PAT-2436-A	23.625	35.750	22.750	34.875	12.00	16.00	13.438	10	0.2875	
PAT-2448-A	23.625	47.875	22.750	47.000	15.00	24.00	16.563	12	0.3581	
							19.750	14	0.4200	
PAT-2460-A	23.625	60.000	22.750	59.125	18.00	26.00	22.900	16	0.5000	
PAT-2472-A	23.625	72.125	22.750	71.250	20.00	30.00	26.000	18	0.5725	
PAT-3636-A	35.750	35.750	34.875	34.875	15.00	24.00	19.750	14	0.4200	
PAT-3648-A	35.750	47.875	34.875	47.000	20.00	30.00	26.000	18	0.5725	

INLET VELOCITY SHALL NOT EXCEED 750 FPM. CONTACT PRECISION AIR APPLICATIONS ENGINEER FOR ASSISTANCE.

NOTES:

- INDICATE FACEPLATE STYLE:
 F = FRAMED * W = WRAP-AROUND
 * NOT OFFERED IN STAINLESS STEEL
- INDICATE MATERIAL / FINISH:
 0 = ALUMINUM / WHITE BAKED ENAMEL
 1 = ALUMINUM / CLEAR ANODIZED
 2 = ALUMINUM / CLEAR ANODIZED WITH 304 SST FACEPLATE / No. 4 POLISH
 3 = 304 STAINLESS STEEL / No. 4 POLISH ON ROOM-SIDE SURFACES
 4 = ALUMINUM DIFFUSER / WHITE BAKED ENAMEL WITH 304 SST FACEPLATE / No. 4 POLISH
- ALL DIMENSIONS SHOWN IN INCHES.

FORM 4-121, EFFECTIVE 10/2018

JOB: _____
 ENGINEER: _____
 ARCHITECT: _____
 CONTRACTOR: _____

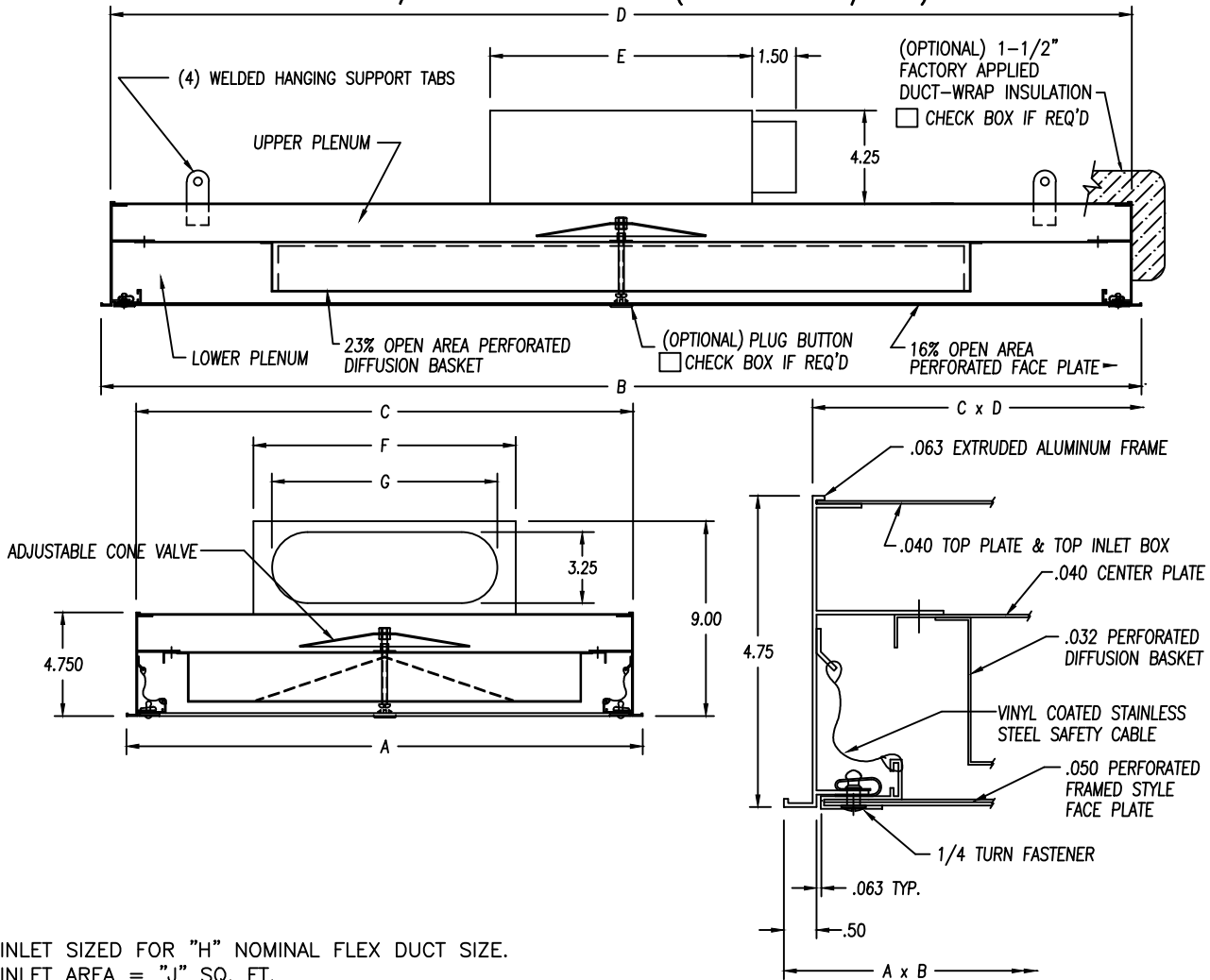


PHONE: 1-800-404-0931 www.precisionairproducts.com

THE ITEMS SHOWN ON THIS DRAWING MAY BE COVERED BY ONE OR MORE PATENTS OF PRECISION AIR PRODUCTS CO. THE DESIGN AND DRAWING ARE THE PROPERTY OF THE CORPORATION AND DUPLICATION IS NOT PERMITTED, EXCEPT WITH WRITTEN CONSENT FROM THE CORPORATION. DIMENSIONS SHOWN ARE SUBJECT TO NORMAL MANUFACTURING TOLERANCES. THIS DRAWING IS FOR SUBMITTAL PURPOSES ONLY AND SUBJECT TO REVISION.

LAMI-VENT™

MODEL: PAT-A W/ END INLET (20-40 CFM/FT²)



INLET SIZED FOR "H" NOMINAL FLEX DUCT SIZE.
INLET AREA = "J" SQ. FT.

MODULE DIMENSIONS (in.)										
MODEL	'A'	'B'	'C'	'D'	'E'	'F'	'G'	'H'	'J'	QNTY.
PAT-1212-A	11.500	11.500	10.625	10.625	9.00	9.00	7.188	6	0.1465	
PAT-1224-A	11.500	23.625	10.625	22.750	9.00	9.00	7.188	6	0.1465	
PAT-2424-A	23.625	23.625	22.750	22.750	12.00	12.00	10.313	8	0.2170	
PAT-2436-A	23.625	35.750	22.750	34.875	12.00	16.00	13.438	10	0.2875	
PAT-2448-A	23.625	47.875	22.750	47.000	15.00	21.00	16.563	12	0.3581	
							19.750	14	0.4200	
PAT-3636-A	35.750	35.750	34.875	34.875	15.00	24.00	19.750	14	0.4200	
PAT-3648-A	35.750	47.875	34.875	47.000	20.00	30.00	26.000	18	0.5725	

INLET VELOCITY SHALL NOT EXCEED 750 FPM. CONTACT PRECISION AIR APPLICATIONS ENGINEER FOR ASSISTANCE.

NOTES:

- INDICATE FACEPLATE STYLE:
 F = FRAMED * W = WRAP-AROUND
 * NOT OFFERED IN STAINLESS STEEL
- INDICATE MATERIAL / FINISH:
 0 = ALUMINUM / WHITE BAKED ENAMEL
 1 = ALUMINUM / CLEAR ANODIZED
 2 = ALUMINUM / CLEAR ANODIZED WITH 304 SST FACEPLATE / No. 4 POLISH
 3 = 304 STAINLESS STEEL / No. 4 POLISH ON ROOM-SIDE SURFACES
 4 = ALUMINUM DIFFUSER / WHITE BAKED ENAMEL WITH 304 SST FACEPLATE / No. 4 POLISH
- ALL DIMENSIONS SHOWN IN INCHES.

FORM 4-122, EFFECTIVE 10/2018

JOB: _____
 ENGINEER: _____
 ARCHITECT: _____
 CONTRACTOR: _____



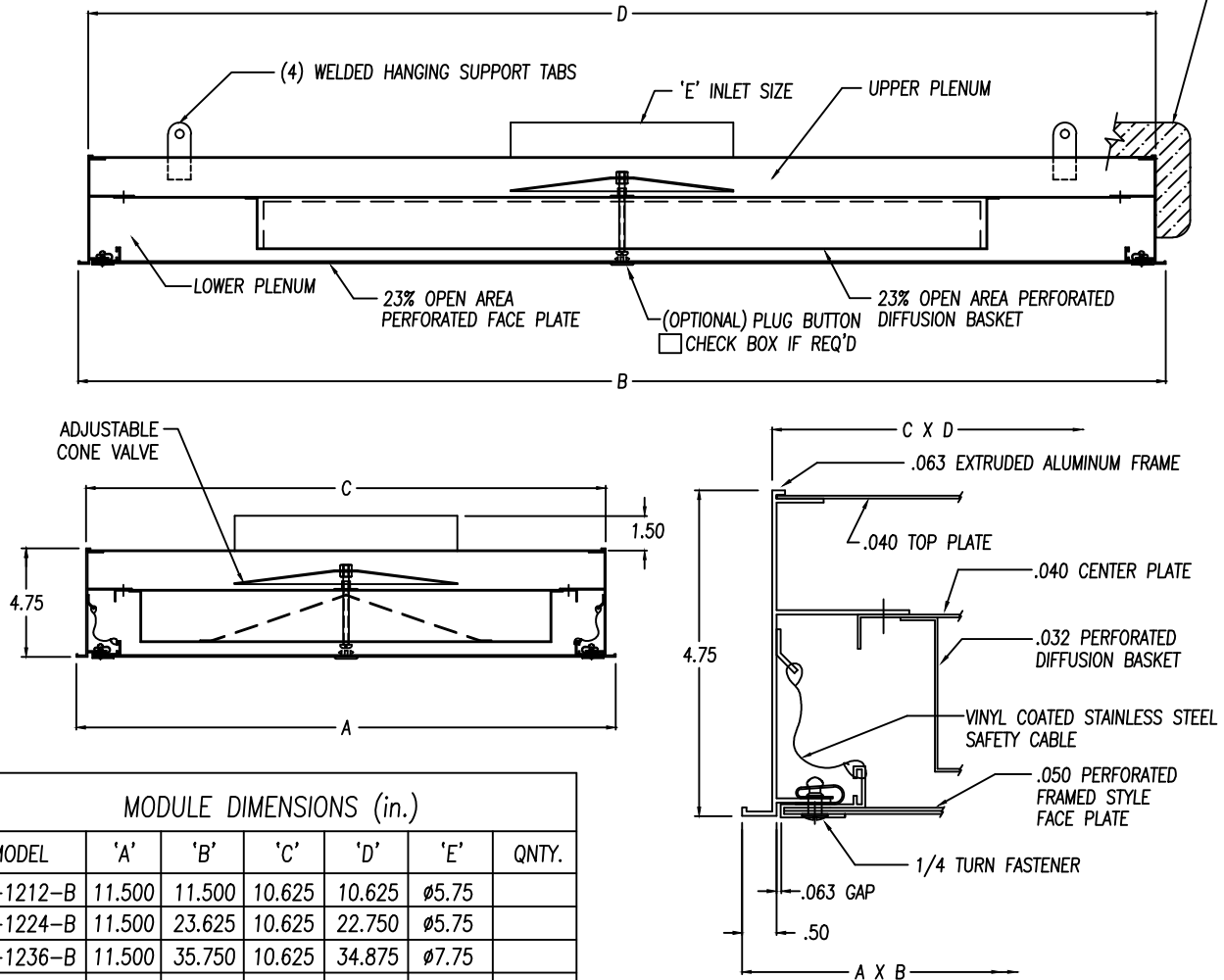
PHONE: 1-800-404-0931 www.precisionairproducts.com

THE ITEMS SHOWN ON THIS DRAWING MAY BE COVERED BY ONE OR MORE PATENTS OF PRECISION AIR PRODUCTS CO. THE DESIGN AND DRAWING ARE THE PROPERTY OF THE CORPORATION AND DUPLICATION IS NOT PERMITTED, EXCEPT WITH WRITTEN CONSENT FROM THE CORPORATION. DIMENSIONS SHOWN ARE SUBJECT TO NORMAL MANUFACTURING TOLERANCES. THIS DRAWING IS FOR SUBMITTAL PURPOSES ONLY AND SUBJECT TO REVISION.

LAMI-VENT™

MODEL: PAT-B (45-65 CFM/FT²)

(OPTIONAL) 1-1/2" FACTORY APPLIED DUCT-WRAP INSULATION
CHECK BOX IF REQ'D



MODULE DIMENSIONS (in.)

MODEL	'A'	'B'	'C'	'D'	'E'	QNTY.
PAT-1212-B	11.500	11.500	10.625	10.625	Ø5.75	
PAT-1224-B	11.500	23.625	10.625	22.750	Ø5.75	
PAT-1236-B	11.500	35.750	10.625	34.875	Ø7.75	
PAT-1248-B	11.500	47.875	10.625	47.000	Ø7.75	
PAT-1260-B	11.500	60.000	10.625	59.125	Ø9.75	
PAT-1272-B	11.500	72.125	10.625	71.250	Ø9.75	
PAT-2424-B	23.625	23.625	22.750	22.750	Ø7.75	
PAT-2436-B	23.625	35.750	22.750	34.875	Ø9.75	
PAT-2448-B	23.625	47.875	22.750	47.000	Ø9.75	
					Ø11.75	
PAT-2460-B	23.625	60.000	22.750	59.125	Ø11.75	
PAT-2472-B	23.625	72.125	22.750	71.250	Ø13.75	
PAT-3636-B	35.750	35.750	34.875	34.875	Ø11.75	
PAT-3648-B	35.750	47.875	34.875	47.000	Ø13.75	
PAT-3660-B	35.750	60.000	34.875	59.125	Ø13.75	

NOTES:

- INDICATE FACEPLATE STYLE:
 F = FRAMED * W = WRAP-AROUND
 * NOT OFFERED IN STAINLESS STEEL
- INDICATE MATERIAL / FINISH:
 0 = ALUMINUM / WHITE BAKED ENAMEL
 1 = ALUMINUM / CLEAR ANODIZED
 2 = ALUMINUM / CLEAR ANODIZED WITH 304 SST FACEPLATE / No. 4 POLISH
 3 = 304 STAINLESS STEEL / No. 4 POLISH ON ROOM-SIDE SURFACES
 4 = ALUMINUM DIFFUSER / WHITE BAKED ENAMEL WITH 304 SST FACEPLATE / No. 4 POLISH
- ALL DIMENSIONS SHOWN IN INCHES.

FORM 4-123, EFFECTIVE 10/2018

JOB: _____
 ENGINEER: _____
 ARCHITECT: _____
 CONTRACTOR: _____

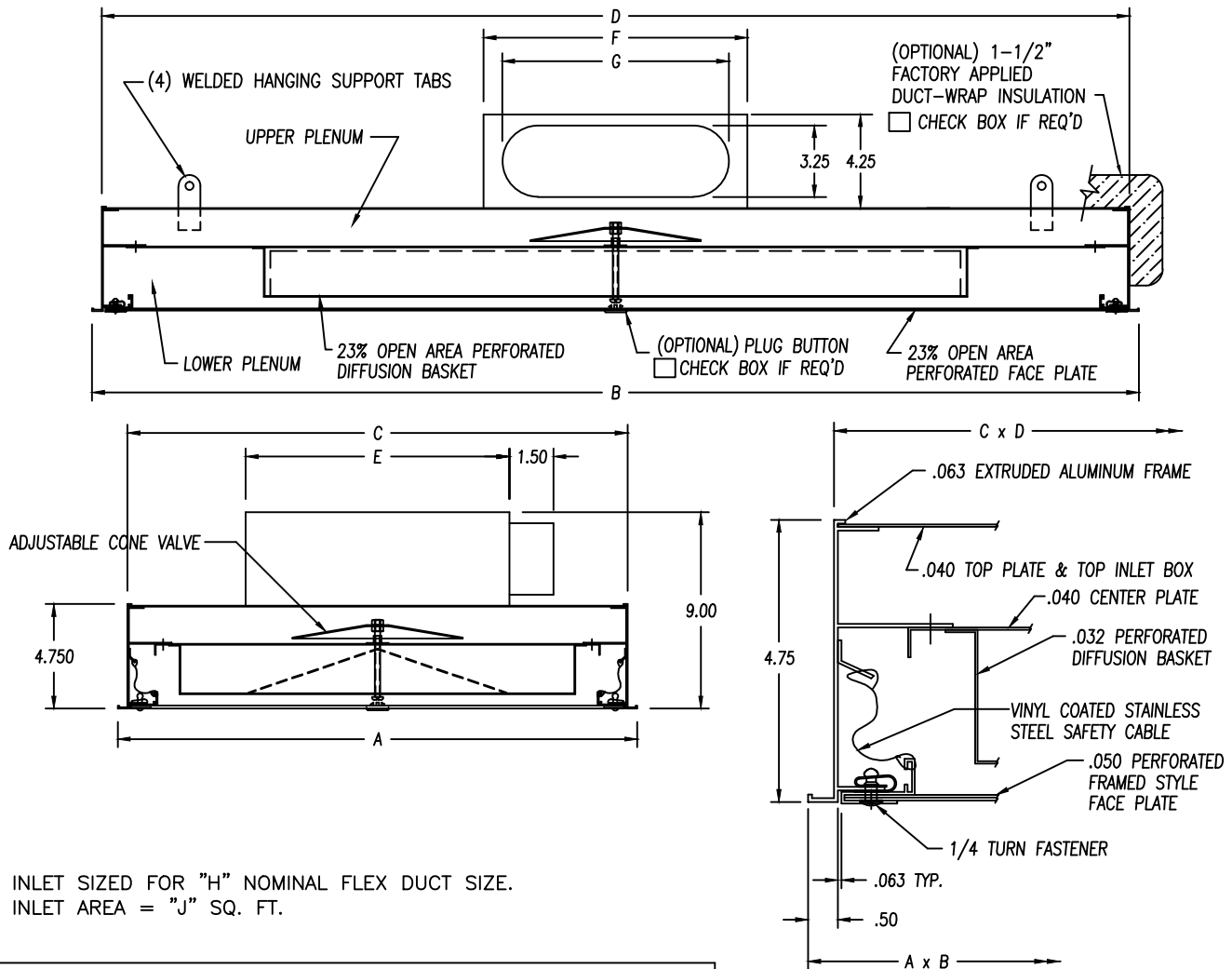


PHONE: 1-800-404-0931 www.precisionairproducts.com

THE ITEMS SHOWN ON THIS DRAWING MAY BE COVERED BY ONE OR MORE PATENTS OF PRECISION AIR PRODUCTS CO. THE DESIGN AND DRAWING ARE THE PROPERTY OF THE CORPORATION AND DUPLICATION IS NOT PERMITTED, EXCEPT WITH WRITTEN CONSENT FROM THE CORPORATION. DIMENSIONS SHOWN ARE SUBJECT TO NORMAL MANUFACTURING TOLERANCES. THIS DRAWING IS FOR SUBMITTAL PURPOSES ONLY AND SUBJECT TO REVISION.

LAMI-VENT™

MODEL: PAT-B W/ SIDE INLET (45-65 CFM/FT²)



INLET SIZED FOR "H" NOMINAL FLEX DUCT SIZE.
INLET AREA = "J" SQ. FT.

MODULE DIMENSIONS (in.)										
MODEL	'A'	'B'	'C'	'D'	'E'	'F'	'G'	'H'	'J'	QNTY.
PAT-1212-B	11.500	11.500	10.625	10.625	9.00	9.00	7.188	6	0.1465	
PAT-1224-B	11.500	23.625	10.625	22.750	9.00	12.00	10.313	8	0.2170	
PAT-1236-B	11.500	35.750	10.625	34.875	9.00	16.00	13.438	10	0.2875	
PAT-2424-B	23.625	23.625	22.750	22.750	14.00	20.00	16.563	12	0.3581	
PAT-2436-B	23.625	35.750	22.750	34.875	18.00	26.00	22.900	16	0.5000	
PAT-2448-B	23.625	47.875	22.750	47.000	20.00	30.00	26.000	18	0.5725	

NOTES:

- INDICATE FACEPLATE STYLE:
 F = FRAMED * W = WRAP-AROUND
 * NOT OFFERED IN STAINLESS STEEL
- INDICATE MATERIAL / FINISH:
 0 = ALUMINUM / WHITE BAKED ENAMEL
 1 = ALUMINUM / CLEAR ANODIZED
 2 = ALUMINUM / CLEAR ANODIZED WITH 304 SST FACEPLATE / No. 4 POLISH
 3 = 304 STAINLESS STEEL / No. 4 POLISH ON ROOM-SIDE SURFACES
 4 = ALUMINUM DIFFUSER / WHITE BAKED ENAMEL WITH 304 SST FACEPLATE / No. 4 POLISH
- ALL DIMENSIONS SHOWN IN INCHES.

FORM 4-124, EFFECTIVE 10/2018

JOB: _____
 ENGINEER: _____
 ARCHITECT: _____
 CONTRACTOR: _____



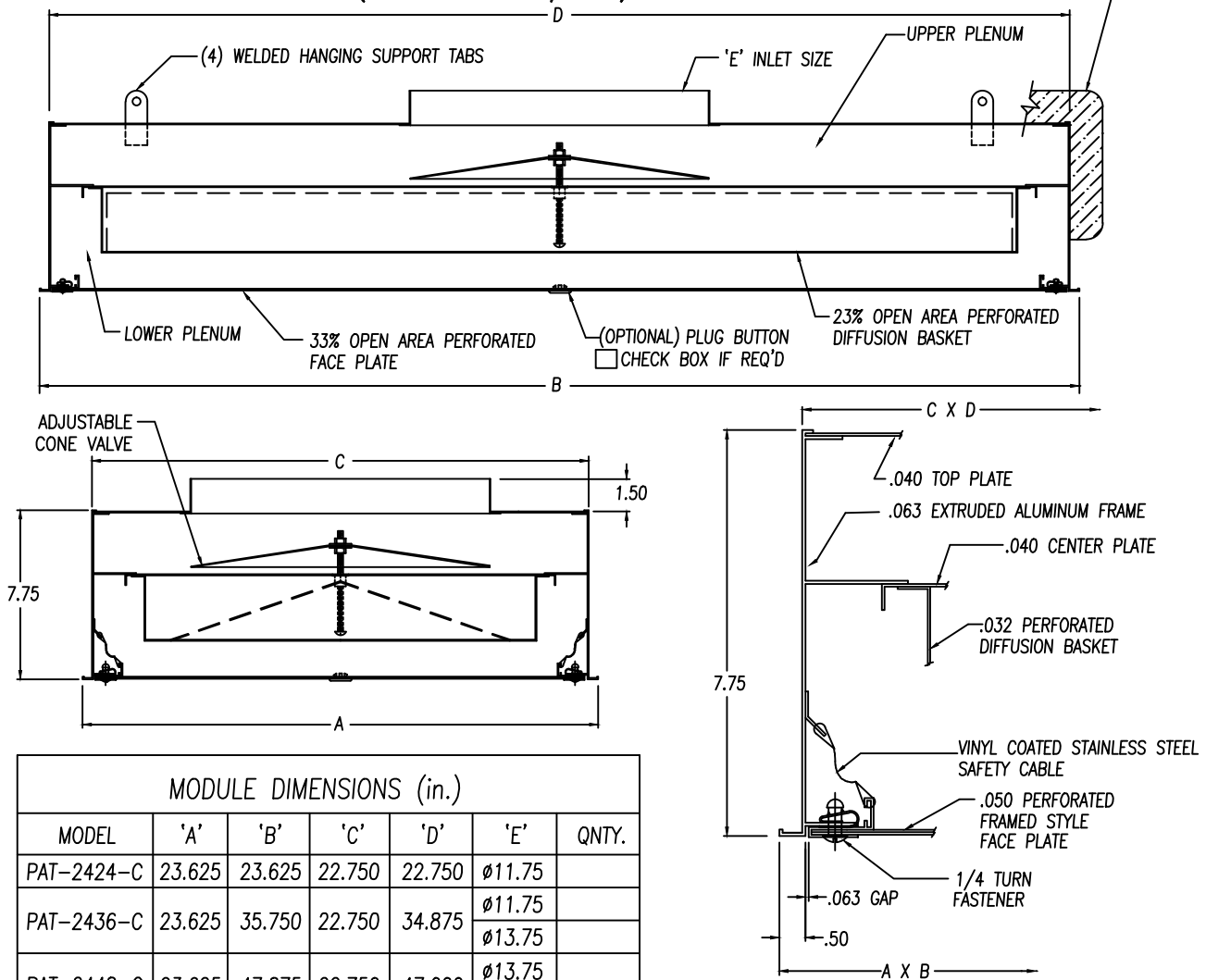
PHONE: 1-800-404-0931 www.precisionairproducts.com

THE ITEMS SHOWN ON THIS DRAWING MAY BE COVERED BY ONE OR MORE PATENTS OF PRECISION AIR PRODUCTS CO. THE DESIGN AND DRAWING ARE THE PROPERTY OF THE CORPORATION AND DUPLICATION IS NOT PERMITTED, EXCEPT WITH WRITTEN CONSENT FROM THE CORPORATION. DIMENSIONS SHOWN ARE SUBJECT TO NORMAL MANUFACTURING TOLERANCES. THIS DRAWING IS FOR SUBMITTAL PURPOSES ONLY AND SUBJECT TO REVISION.

LAMI-VENT™

MODEL: PAT-C (70-130 CFM/FT²)

(OPTIONAL) 1-1/2" FACTORY APPLIED DUCT-WRAP INSULATION
CHECK BOX IF REQ'D



MODULE DIMENSIONS (in.)						
MODEL	'A'	'B'	'C'	'D'	'E'	QNTY.
PAT-2424-C	23.625	23.625	22.750	22.750	Ø11.75	
PAT-2436-C	23.625	35.750	22.750	34.875	Ø11.75 Ø13.75	
PAT-2448-C	23.625	47.875	22.750	47.000	Ø13.75 Ø15.75	
PAT-2460-C	23.625	60.000	22.750	59.125	Ø15.75 Ø17.75	
PAT-2472-C	23.625	72.125	22.750	71.250	Ø17.75	
PAT-3636-C	35.750	35.750	34.875	34.875	Ø15.75	
PAT-3648-C	35.750	47.875	34.875	47.000	Ø15.75 Ø17.75	
PAT-3660-C	35.750	60.000	34.875	59.125	Ø17.75 18.00 SQ	

NOTES:

- INDICATE FACEPLATE STYLE:
 F = FRAMED * W = WRAP-AROUND
 * NOT OFFERED IN STAINLESS STEEL
- INDICATE MATERIAL / FINISH:
 0 = ALUMINUM / WHITE BAKED ENAMEL
 1 = ALUMINUM / CLEAR ANODIZED
 2 = ALUMINUM / CLEAR ANODIZED WITH 304 SST FACEPLATE / No. 4 POLISH
 3 = 304 STAINLESS STEEL / No. 4 POLISH ON ROOM-SIDE SURFACES
 4 = ALUMINUM DIFFUSER / WHITE BAKED ENAMEL WITH 304 SST FACEPLATE / No. 4 POLISH
- ALL DIMENSIONS SHOWN IN INCHES.

FORM 4-126, EFFECTIVE 10/2018

JOB: _____
 ENGINEER: _____
 ARCHITECT: _____
 CONTRACTOR: _____



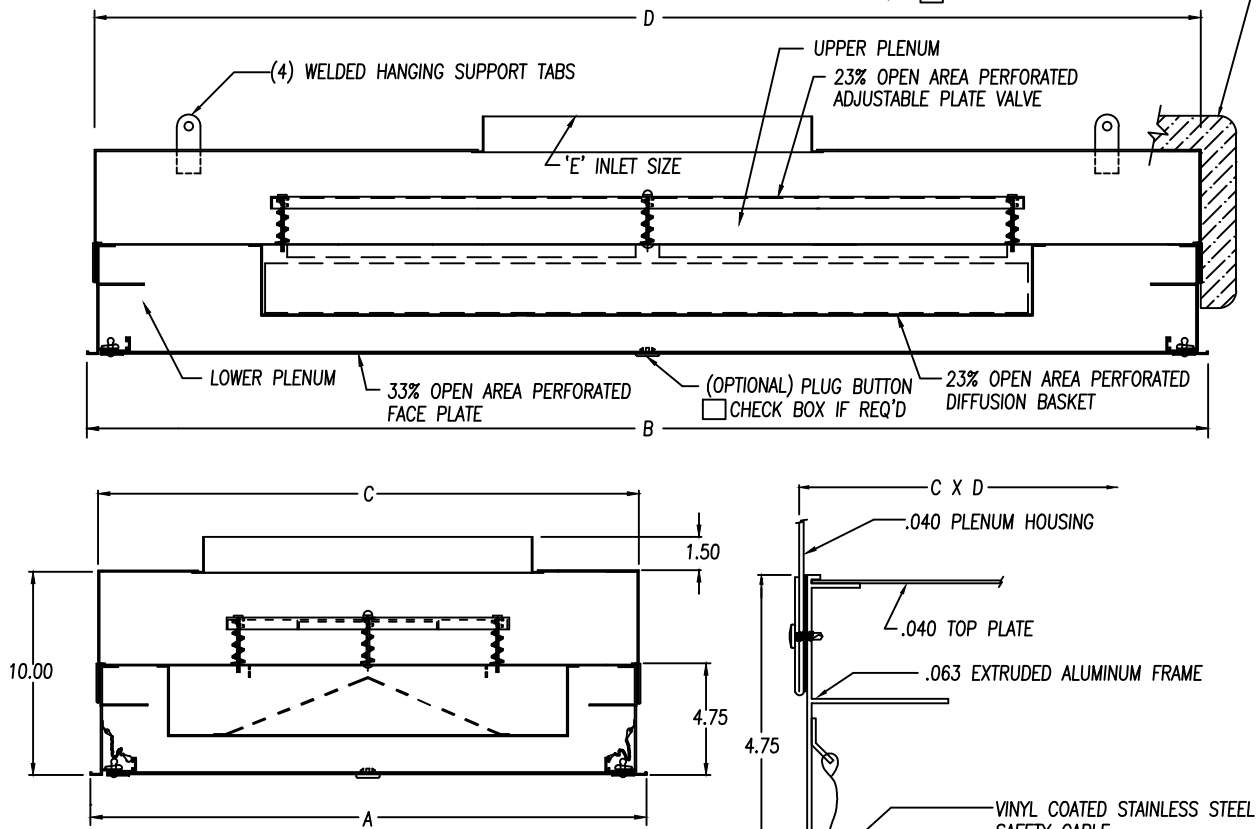
PHONE: 1-800-404-0931 www.precisionairproducts.com

THE ITEMS SHOWN ON THIS DRAWING MAY BE COVERED BY ONE OR MORE PATENTS OF PRECISION AIR PRODUCTS CO. THE DESIGN AND DRAWING ARE THE PROPERTY OF THE CORPORATION AND DUPLICATION IS NOT PERMITTED, EXCEPT WITH WRITTEN CONSENT FROM THE CORPORATION. DIMENSIONS SHOWN ARE SUBJECT TO NORMAL MANUFACTURING TOLERANCES. THIS DRAWING IS FOR SUBMITTAL PURPOSES ONLY AND SUBJECT TO REVISION.

LAMI-VENT™

MODEL: PAT-D (125-145 CFM/FT²)

(OPTIONAL) 1-1/2" FACTORY APPLIED DUCT-WRAP INSULATION
CHECK BOX IF REQ'D



MODULE DIMENSIONS (in.)

MODEL	'A'	'B'	'C'	'D'	'E'	QNTY.
PAT-1212-D	11.500	11.500	10.625	10.625	8 SQ.	
PAT-1224-D	11.500	23.625	10.625	22.750	8 SQ.	
PAT-1236-D	11.500	35.750	10.625	34.875	8 SQ.	
PAT-1248-D	11.500	47.875	10.625	47.000	8 x 12	
PAT-1260-D	11.500	60.000	10.625	59.125	8 x 12	
PAT-1272-D	11.500	72.125	10.625	71.250	8 X 12	
PAT-2424-D	23.625	23.625	22.750	22.750	10 SQ.	
PAT-2436-D	23.625	35.750	22.750	34.875	12 SQ.	
PAT-2448-D	23.625	47.875	22.750	47.000	14 SQ.	
PAT-2460-D	23.625	60.000	22.750	59.125	14 SQ.	
PAT-2472-D	23.625	72.125	22.750	71.250	16 SQ.	
PAT-3636-D	35.750	35.750	34.875	34.875	14 SQ.	
PAT-3648-D	35.750	47.875	34.875	47.000	16 SQ.	
PAT-3660-D	35.750	60.000	34.875	59.125	18 SQ.	

NOTES:

- INDICATE FACEPLATE STYLE:
 F = FRAMED * W = WRAP-AROUND
 * NOT OFFERED IN STAINLESS STEEL
- INDICATE MATERIAL / FINISH:
 0 = ALUMINUM / WHITE BAKED ENAMEL
 1 = ALUMINUM / CLEAR ANODIZED
 2 = ALUMINUM / CLEAR ANODIZED WITH 304 SST FACEPLATE / No. 4 POLISH
 3 = 304 STAINLESS STEEL / No. 4 POLISH ON ROOM-SIDE SURFACES
 4 = ALUMINUM DIFFUSER / WHITE BAKED ENAMEL WITH 304 SST FACEPLATE / No. 4 POLISH
- ALL DIMENSIONS SHOWN IN INCHES.

FORM 4-127, EFFECTIVE 10/2018

JOB: _____
 ENGINEER: _____
 ARCHITECT: _____
 CONTRACTOR: _____

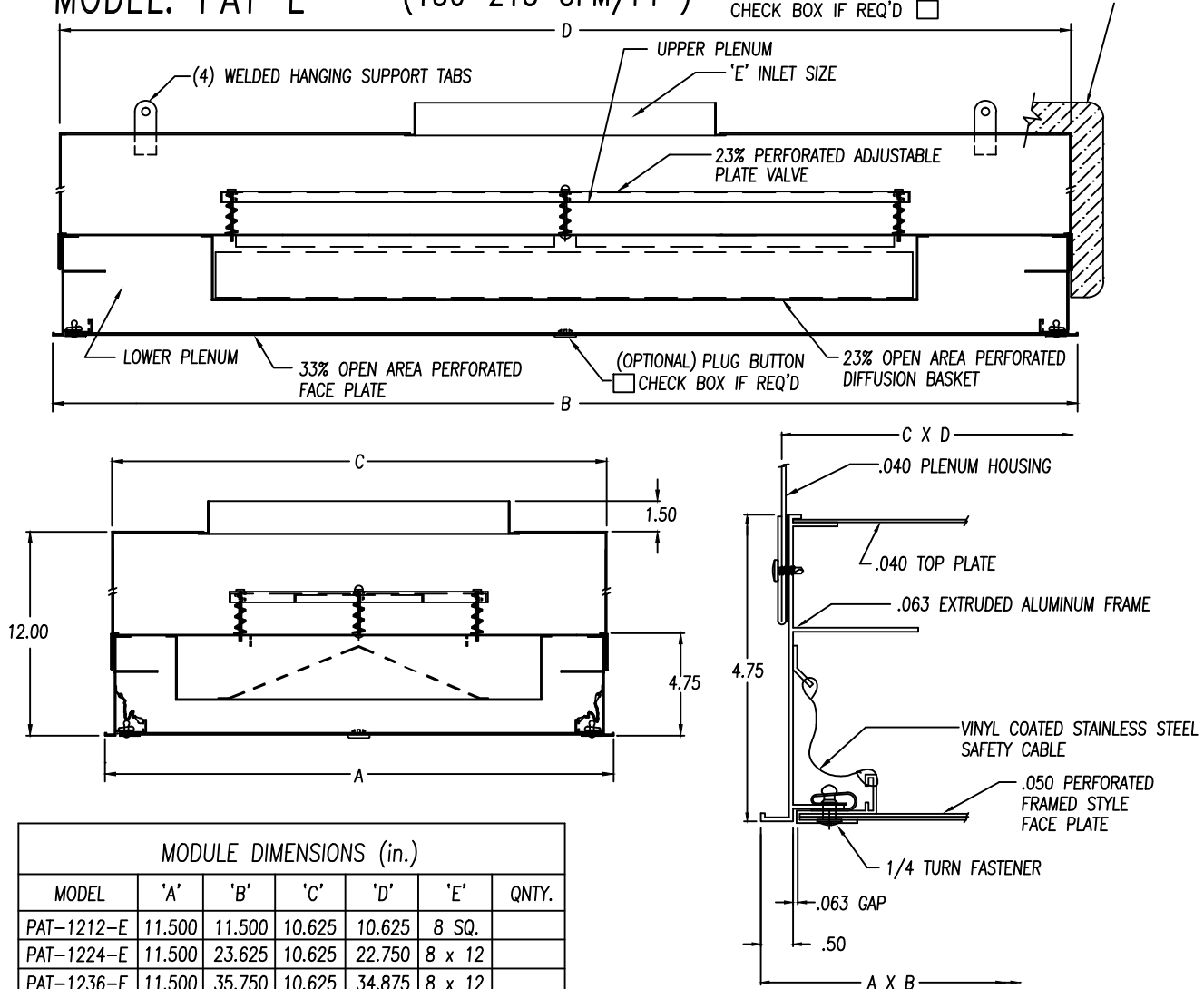


PHONE: 1-800-404-0931 www.precisionairproducts.com

THE ITEMS SHOWN ON THIS DRAWING MAY BE COVERED BY ONE OR MORE PATENTS OF PRECISION AIR PRODUCTS CO. THE DESIGN AND DRAWING ARE THE PROPERTY OF THE CORPORATION AND DUPLICATION IS NOT PERMITTED, EXCEPT WITH WRITTEN CONSENT FROM THE CORPORATION. DIMENSIONS SHOWN ARE SUBJECT TO NORMAL MANUFACTURING TOLERANCES. THIS DRAWING IS FOR SUBMITTAL PURPOSES ONLY AND SUBJECT TO REVISION.

LAMI-VENT™

MODEL: PAT-E (150-215 CFM/FT²) (OPTIONAL) 1-1/2" FACTORY APPLIED DUCT-WRAP INSULATION CHECK BOX IF REQ'D



MODULE DIMENSIONS (in.)

MODEL	'A'	'B'	'C'	'D'	'E'	QNTY.
PAT-1212-E	11.500	11.500	10.625	10.625	8 SQ.	
PAT-1224-E	11.500	23.625	10.625	22.750	8 x 12	
PAT-1236-E	11.500	35.750	10.625	34.875	8 x 12	
PAT-1248-E	11.500	47.875	10.625	47.000	8 x 22	
PAT-1260-E	11.500	60.000	10.625	59.125	8 x 22	
PAT-1272-E	11.500	72.125	10.625	71.250	8 x 22	
PAT-2424-E	23.625	23.625	22.750	22.750	14 SQ.	
PAT-2436-E	23.625	35.750	22.750	34.875	16 SQ.	
PAT-2448-E	23.625	47.875	22.750	47.000	18 SQ.	
PAT-2460-E	23.625	60.000	22.750	59.125	18 SQ.	
PAT-2472-E	23.625	72.125	22.750	71.250	20 SQ.	
PAT-3636-E	35.750	35.750	34.875	34.875	20 SQ.	
PAT-3648-E	35.750	47.875	34.875	47.000	20 SQ.	
PAT-3660-E	35.750	60.000	34.875	59.125	20 SQ.	

NOTES:

- INDICATE FACEPLATE STYLE:
 F = FRAMED * W = WRAP-AROUND
 * NOT OFFERED IN STAINLESS STEEL
- INDICATE MATERIAL / FINISH:
 0 = ALUMINUM / WHITE BAKED ENAMEL
 1 = ALUMINUM / CLEAR ANODIZED
 2 = ALUMINUM / CLEAR ANODIZED WITH 304 SST FACEPLATE / No. 4 POLISH
 3 = 304 STAINLESS STEEL / No. 4 POLISH ON ROOM-SIDE SURFACES
 4 = ALUMINUM DIFFUSER / WHITE BAKED ENAMEL WITH 304 SST FACEPLATE / No. 4 POLISH
- ALL DIMENSIONS SHOWN IN INCHES.

FORM 4-128, EFFECTIVE 10/2018

JOB: _____
 ENGINEER: _____
 ARCHITECT: _____
 CONTRACTOR: _____

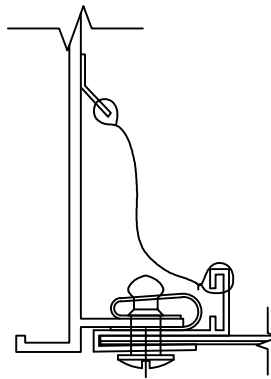
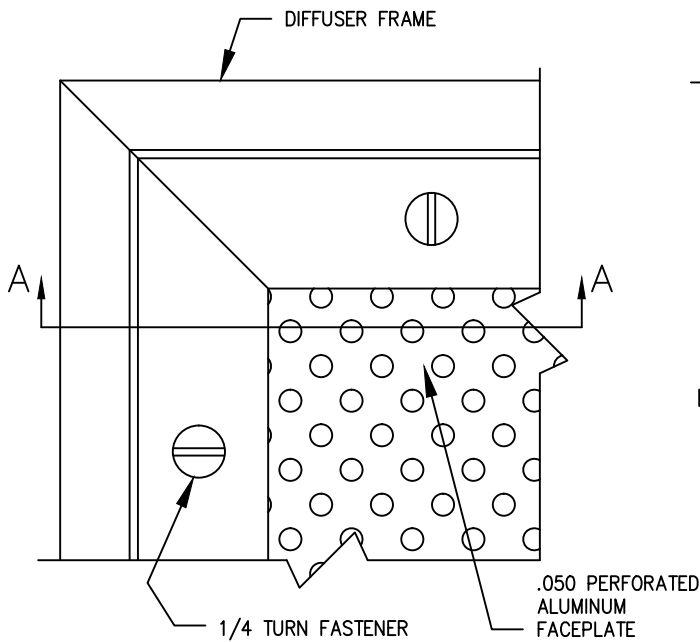


PHONE: 1-800-404-0931 www.precisionairproducts.com

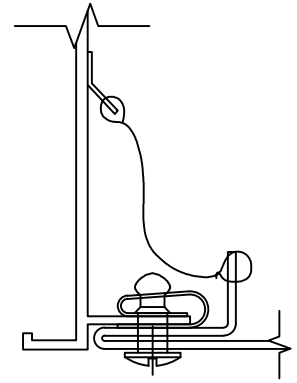
THE ITEMS SHOWN ON THIS DRAWING MAY BE COVERED BY ONE OR MORE PATENTS OF PRECISION AIR PRODUCTS CO. THE DESIGN AND DRAWING ARE THE PROPERTY OF THE CORPORATION AND DUPLICATION IS NOT PERMITTED, EXCEPT WITH WRITTEN CONSENT FROM THE CORPORATION. DIMENSIONS SHOWN ARE SUBJECT TO NORMAL MANUFACTURING TOLERANCES. THIS DRAWING IS FOR SUBMITTAL PURPOSES ONLY AND SUBJECT TO REVISION.

LAMI-VENT™, HEPA-VENT DS, LOW-PROFILE HEPA-VENT FACE PLATE STYLE

DETAILS

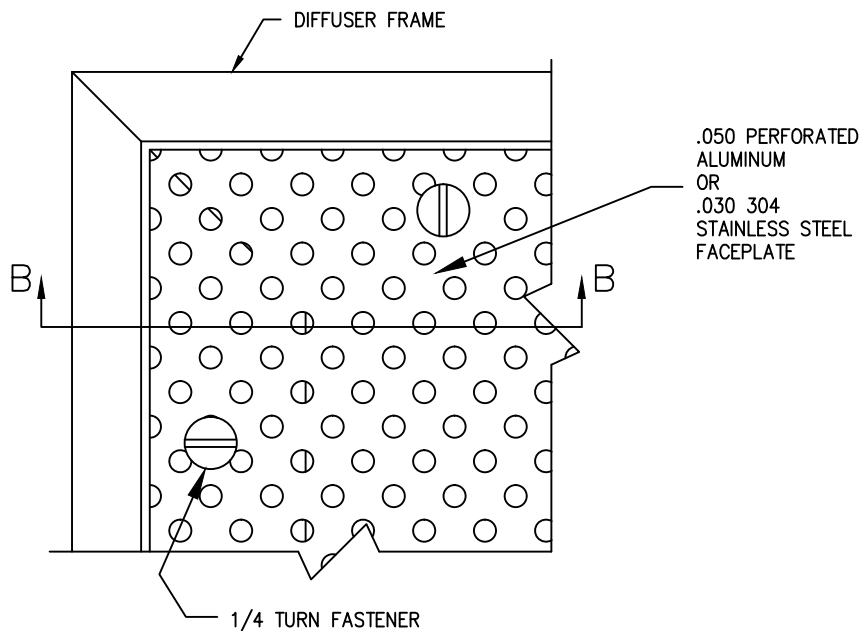


SECTION A-A

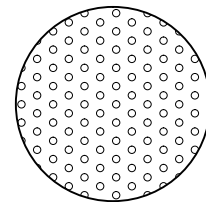


SECTION B-B

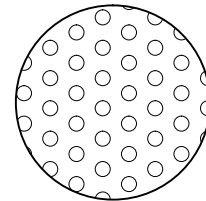
FRAMED FACEPLATE STYLE (STANDARD)



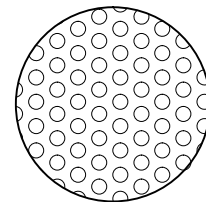
WRAP-AROUND FACEPLATE (OPTIONAL)



16% OPEN PERF.
FOR 'A' SERIES DIFFUSER



23% OPEN PERF.
FOR 'B' SERIES DIFFUSER



33% OPEN PERF.
FOR 'C', 'D' & 'E' SERIES DIFFUSER

FORM #4-132, EFFECTIVE 10/2018

JOB: _____
ENGINEER: _____
ARCHITECT: _____
CONTRACTOR: _____



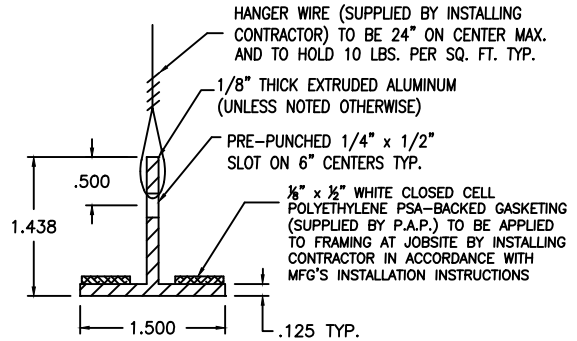
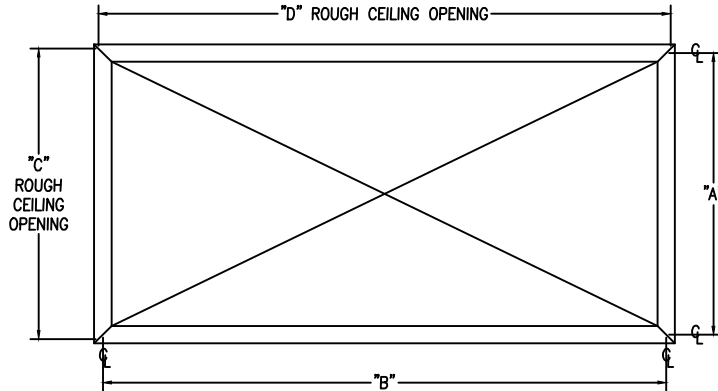
The O.R. AirCare Specialists

PHONE: 1-800-404-0931 www.precisionairproducts.com

THE ITEMS SHOWN ON THIS DRAWING MAY BE COVERED BY ONE OR MORE PATENTS OF PRECISION AIR PRODUCTS CO. THE DESIGN AND DRAWING ARE THE PROPERTY OF THE CORPORATION AND DUPLICATION IS NOT PERMITTED, EXCEPT WITH WRITTEN CONSENT FROM THE CORPORATION. DIMENSIONS SHOWN ARE SUBJECT TO NORMAL MANUFACTURING TOLERANCES. THIS DRAWING IS FOR SUBMITTAL PURPOSES ONLY AND SUBJECT TO REVISION.

LAMI-VENT™

T-BAR PLASTER FRAME OPTION



TEE DETAIL

PLASTER FRAME DIMENSIONS (in.)

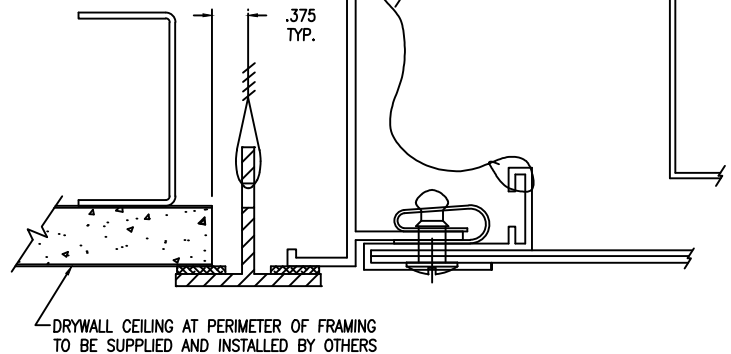
MODEL	'A'	'B'	'C'	'D'	QNTY.
PLFW-1212	12.125	12.125	12.875	12.875	
PLFW-1224	12.125	24.250	12.875	25.000	
PLFW-1236	12.125	36.375	12.875	37.125	
PLFW-1248	12.125	48.500	12.875	49.250	
PLFW-1260	12.125	60.625	12.875	61.375	
PLFW-1272	12.125	72.750	12.875	73.500	
PLFW-2424	24.250	24.250	25.000	25.000	
PLFW-2436	24.250	36.375	25.000	37.125	
PLFW-2448	24.250	48.500	25.000	49.250	
PLFW-2460	24.250	60.625	25.000	61.375	
PLFW-2472	24.250	72.750	25.000	73.500	
PLFW-3636	36.375	36.375	37.125	37.125	
PLFW-3648	36.375	48.500	37.125	49.250	
PLFW-3660	36.375	60.625	37.125	61.375	

NOTES:

- INDICATE MATERIAL / FINISH:
 - 0 = ALUMINUM / WHITE BAKED ENAMEL
 - 1 = ALUMINUM / CLEAR ANODIZED
 - 2 = 16 Ga. 304 STAINLESS STEEL / No. 4 POLISH

2. ALL DIMENSIONS SHOWN IN INCHES.

FORM 4-131, EFFECTIVE 10/2018



JOB: _____
 ENGINEER: _____
 ARCHITECT: _____
 CONTRACTOR: _____



PHONE: 1-800-404-0931 www.precisionairproducts.com

THE ITEMS SHOWN ON THIS DRAWING MAY BE COVERED BY ONE OR MORE PATENTS OF PRECISION AIR PRODUCTS CO. THE DESIGN AND DRAWING ARE THE PROPERTY OF THE CORPORATION AND DUPLICATION IS NOT PERMITTED, EXCEPT WITH WRITTEN CONSENT FROM THE CORPORATION. DIMENSIONS SHOWN ARE SUBJECT TO NORMAL MANUFACTURING TOLERANCES. THIS DRAWING IS FOR SUBMITTAL PURPOSES ONLY AND SUBJECT TO REVISION.