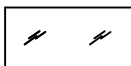
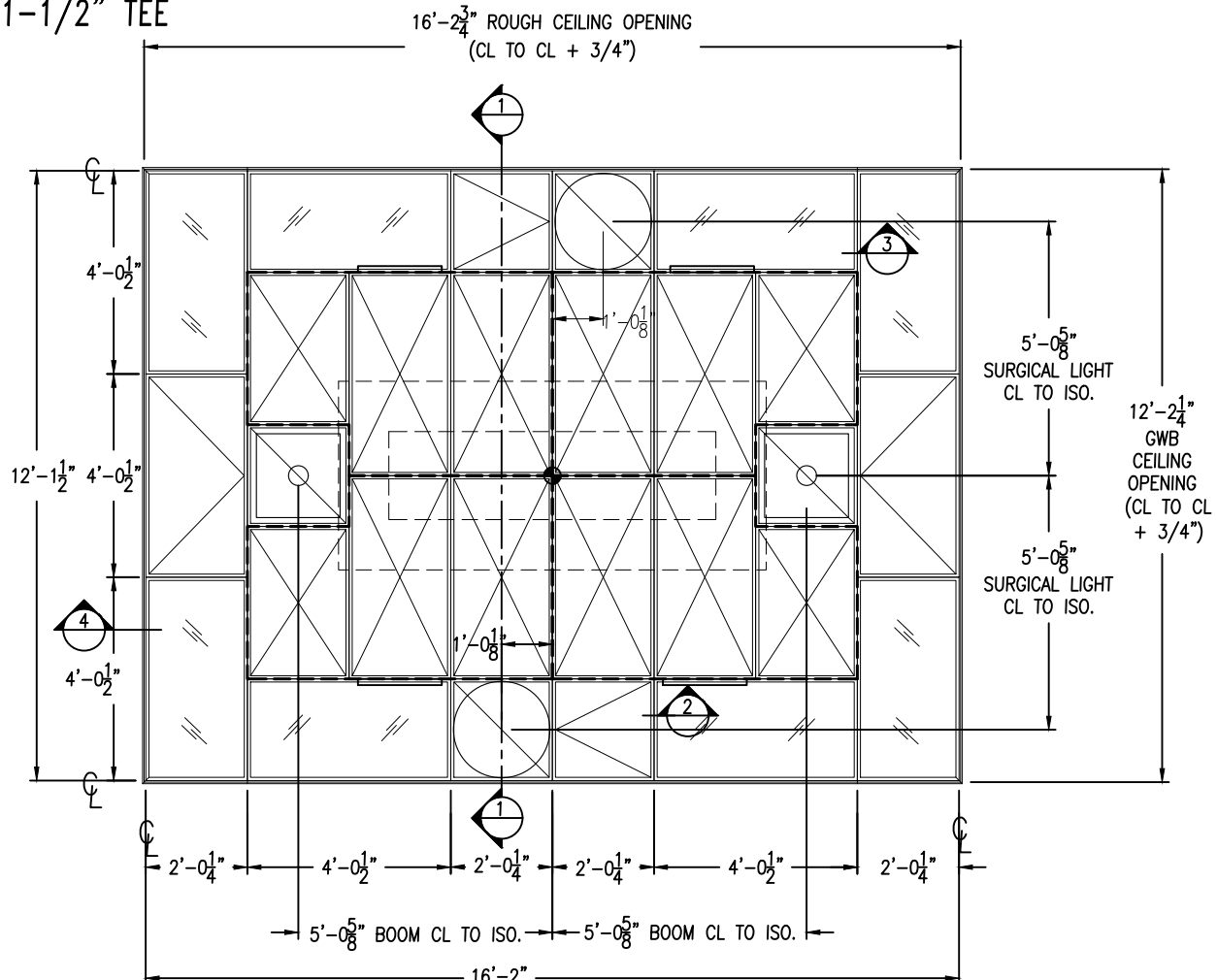
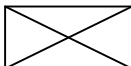


# SURGICAIR™ PLENUM INTEGRATED CEILING SYSTEM

SAMPLE REFLECTED CEILING PLAN W/ 2 SURGICAL LIGHTS & 2 BOOMS  
1-1/2" TEE



GRID/LAY-IN/RECESSED SIZE LIGHTING FIXTURE,  
SUPPLIED BY OTHERS.



LAMI-VENT OR HEPA DIFFUSER WITHIN PLENUM  
SECTION. REFER TO MECHANICAL PLAN FOR  
PLENUM & INLET DETAILS.



BLANK-OFF/FILL-IN PANEL. ANY CUTS REQUIRED FOR  
ACCEPTANCE OF BOOM STRUCTURAL TO BE  
COMPLETED IN FIELD BY INSTALLING CONTRACTOR.  
REFER TO FILL-IN PANEL CUT SHEETS FOR DETAILS.



REMOVABLE BLANK-OFF/FILL-IN PANEL FOR BOOM  
ACCESS.

## NOTES:

1. ALL DIMENSIONS TO CENTERLINE OF TEE UNLESS OTHERWISE NOTED.
2. PERIMETER FRAMING FOR LIGHTS TO BE SUPPLIED IN:  
4' - 2' x 12' SECTIONS
3. GASKETED FRAMING IS INTEGRAL TO (4) 4'x6' PLENUM SECTIONS;  
FACTORY-WELDED.
4. FINISH: ☐ WHITE BAKED ENAMEL  
☐ CLEAR ANODIZED ALUMINUM

FORM 5-221, EFF. 12/2018

JOB: \_\_\_\_\_  
ENGINEER: \_\_\_\_\_  
ARCHITECT: \_\_\_\_\_  
CONTRACTOR: \_\_\_\_\_



PHONE: 1-800-404-0931 www.precisionairproducts.com

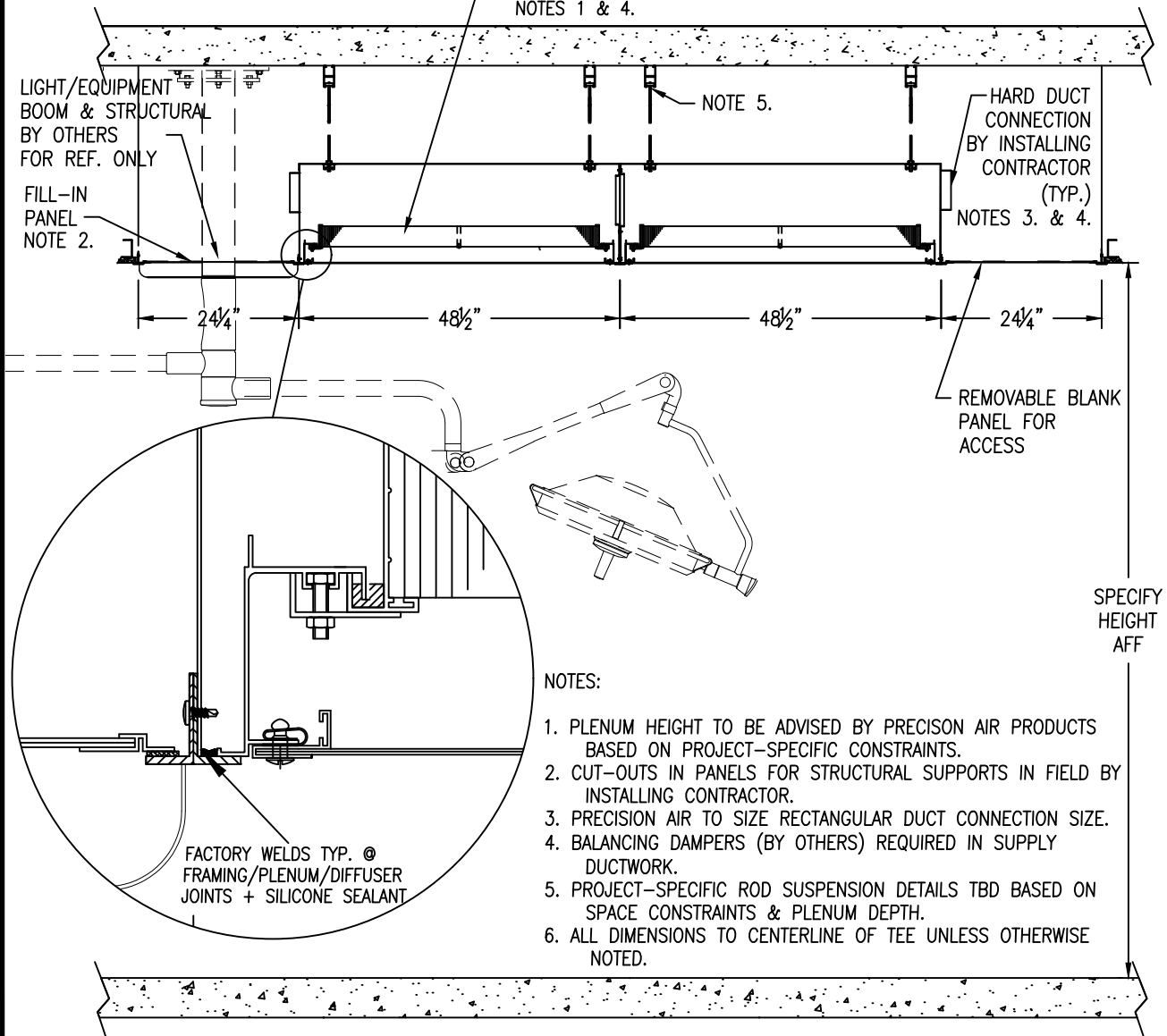
THE ITEMS SHOWN ON THIS DRAWING MAY BE COVERED BY ONE OR MORE PATENTS OF PRECISION AIR PRODUCTS CO. THE DESIGN AND DRAWING ARE THE PROPERTY OF THE CORPORATION AND DUPLICATION IS NOT PERMITTED. EXCEPT WITH WRITTEN CONSENT FROM THE CORPORATION. DIMENSIONS SHOWN ARE SUBJECT TO NORMAL MANUFACTURING TOLERANCES. THIS DRAWING IS FOR SUBMITTAL PURPOSES ONLY AND SUBJECT TO REVISION.

# SURGICAIR™ PLENUM

## INTEGRATED CEILING SYSTEM

### SECTION THROUGH CEILING (SAMPLE WITH HEPA FILTERED DIFFUSERS)

CHOICE OF DIFFUSER TYPE WITHIN PLENUM (HEPA FILTERS SHOWN).  
FOR PLENUM WITH LAMINAR DIFFUSERS, REFER TO DWG. #5-222.  
REFER TO DIFFUSER SUBMITTALS FOR ADDITIONAL FILTER AND  
CONSTRUCTION DETAILS.  
NOTES 1 & 4.



1 SECTION THROUGH CEILING

FORM 5-222, EFF. 12/2018

JOB: \_\_\_\_\_  
ENGINEER: \_\_\_\_\_  
ARCHITECT: \_\_\_\_\_  
CONTRACTOR: \_\_\_\_\_

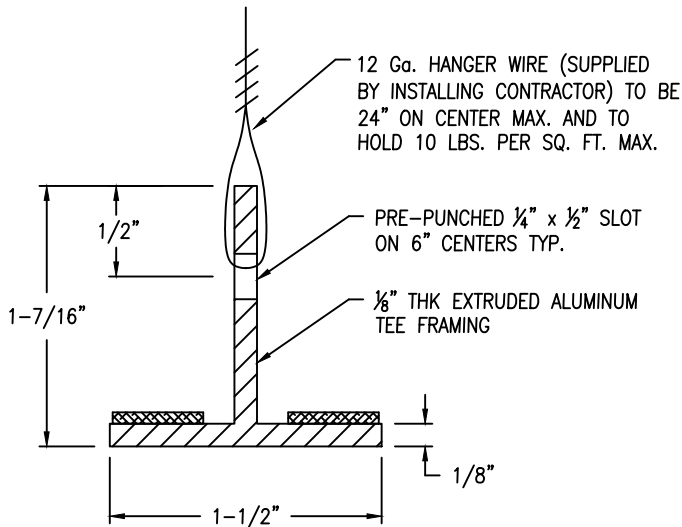


PHONE: 1-800-404-0931 www.precisionairproducts.com

THE ITEMS SHOWN ON THIS DRAWING MAY BE COVERED BY ONE OR MORE PATENTS OF PRECISION AIR PRODUCTS CO. THE DESIGN AND DRAWING ARE THE PROPERTY OF THE CORPORATION AND DUPLICATION IS NOT PERMITTED, EXCEPT WITH WRITTEN CONSENT FROM THE CORPORATION. DIMENSIONS SHOWN ARE SUBJECT TO NORMAL MANUFACTURING TOLERANCES. THIS DRAWING IS FOR SUBMITTAL PURPOSES ONLY AND SUBJECT TO REVISION.

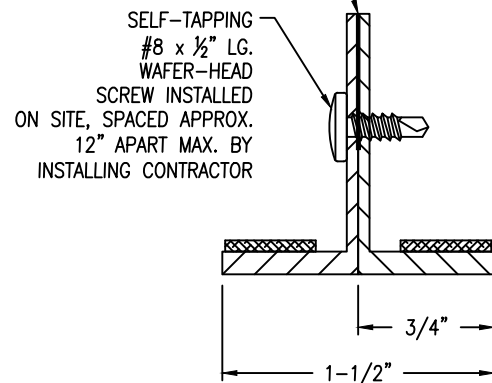
# SURGICAIR™ PLENUM INTEGRATED CEILING SYSTEM

## 1-1/2" WIDE PROFILE SECTIONS

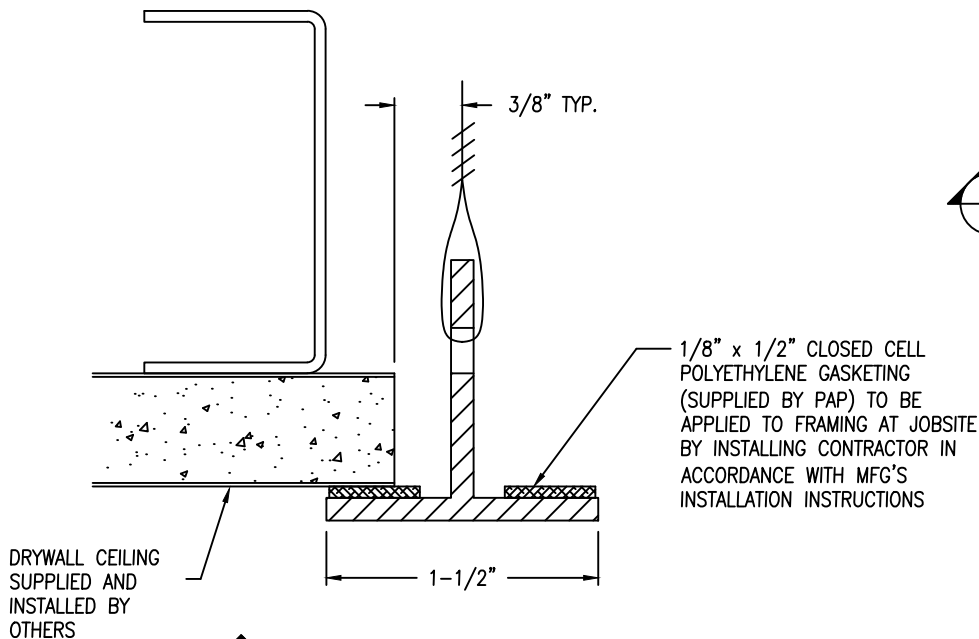


2 TYP. SECTION THRU TEE WIRE HANGER OPTION

WHITE CLOSED-CELL POLYETHYLENE GASKET TAPE 0.75" WD x 0.031" THK. - FURN BY PAP, APPLIED BY CONTR.



3 SECTION AT BUTTING L's



4 SECTION AT FRAMING PERIMETER

FORM 5-224, EFF. 12/2018

JOB: \_\_\_\_\_  
ENGINEER: \_\_\_\_\_  
ARCHITECT: \_\_\_\_\_  
CONTRACTOR: \_\_\_\_\_

 **Precision Air**  
The O.R. AirCare Specialists

PHONE: 1-800-404-0931 www.precisionairproducts.com

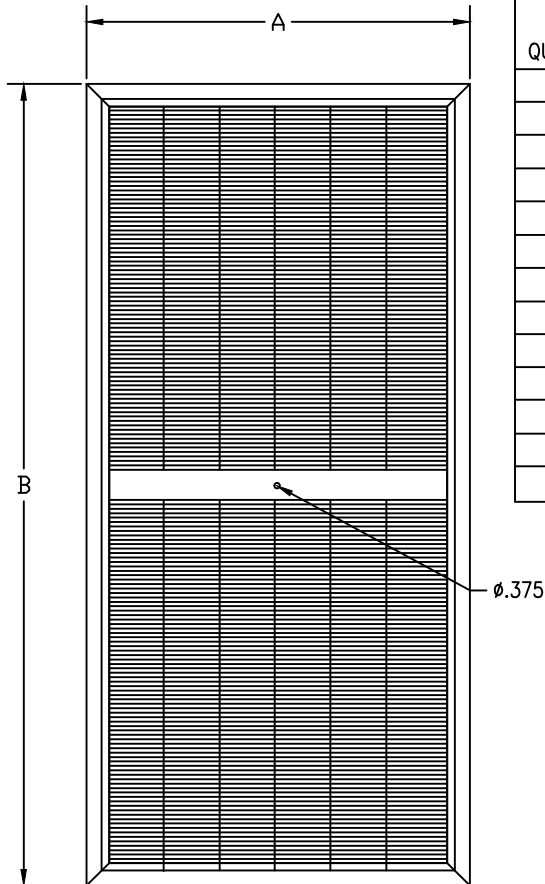
THE ITEMS SHOWN ON THIS DRAWING MAY BE COVERED BY ONE OR MORE PATENTS OF PRECISION AIR PRODUCTS CO. THE DESIGN AND DRAWING ARE THE PROPERTY OF THE CORPORATION AND DUPLICATION IS NOT PERMITTED, EXCEPT WITH WRITTEN CONSENT FROM THE CORPORATION. DIMENSIONS SHOWN ARE SUBJECT TO NORMAL MANUFACTURING TOLERANCES. THIS DRAWING IS FOR SUBMITTAL PURPOSES ONLY AND SUBJECT TO REVISION.

# HEPA-FILTERS

FOR USE WITH HEP-DS-A, HEP-DS-B &  
LOW-A UNITS

MODEL GEL-L  
MODEL GEL-M  
GEL SEAL FILTER

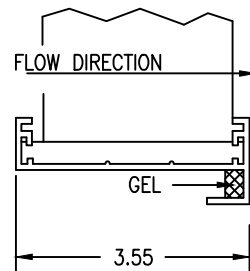
LOW FLOW - 53mm MEDIA  
MEDIUM FLOW - 70mm MEDIA



QUANTITY	NOMINAL DIFFUSER SIZE	FILTER SIZE		ACTIVE MEDIA AREA W/ CENTER BOARD	ACTIVE MEDIA AREA W/O CENTER BOARD
		A	B		
	1 x 2	7.375	19.500	0.57 ft <sup>2</sup>	0.61 ft <sup>2</sup>
	1 x 3	7.375	31.625	1.00 ft <sup>2</sup>	1.04 ft <sup>2</sup>
	1 x 4	7.375	43.750	1.43 ft <sup>2</sup>	**
	1 x 5	7.375	55.875	1.86 ft <sup>2</sup>	**
	1 x 6	7.375	68.000	2.29 ft <sup>2</sup>	**
	2 x 2	19.500	19.500	1.91 ft <sup>2</sup>	2.06 ft <sup>2</sup>
	2 x 3	19.500	31.625	3.36 ft <sup>2</sup>	3.51 ft <sup>2</sup>
	2 x 4	19.500	43.750	4.81 ft <sup>2</sup>	**
	2 x 5	19.500	55.875	6.26 ft <sup>2</sup>	**
	2 x 6	19.500	68.000	7.71 ft <sup>2</sup>	**
	3 x 3	31.625	31.625	5.72 ft <sup>2</sup>	**
	3 x 4	31.625	43.750	8.19 ft <sup>2</sup>	**
	3 x 5	31.625	55.875	10.67 ft <sup>2</sup>	**

\* CENTER BOARD REQUIRED ON ALL DIFFUSERS WITH TOP INLETS. DIFFUSERS WITH SIDE OR END INLETS DO NOT REQUIRE CENTER BOARDS EXCEPT FOR SIZES AS NOTED ABOVE.

\*\* NOT AVAILABLE WITHOUT CENTER BOARD.



## NOTES:

1. FILTER MEDIA: UNIFORM NON-SHED MICRO-GLASS
2. SEPARATOR MAT'L: HOT MELT SPACED AT 44mm INTERVALS
3. FRAME MAT'L: 6063-T5 ANODIZED ALUMINUM (CENTER DIVIDER PROVIDED ON SIZES LARGER THAN 4' LONG. OPTIONAL ON LOW-A MODEL OR HEP-DS-A/B w/ SIDE/END INLETS.)
4. SEALANT MAT'L: FIRE-RETARDANT SELF-EXTINGUISHING POLYURETHANE, LOW-OUTGASSING
5. SEAL: NON-FLOWING URETHANE GEL IN CHANNEL ON DOWNSTREAM SIDE OF FLANGE

## FILTER SPECIFICATIONS:

EFFICIENCY: 99.99% @ 0.3 MICRON

✓	PLEAT DEPTH	RESISTANCE
	53mm	0.45" w.g. @ 100 FPM
	70mm	0.34" w.g. @ 100 FPM

FORM 4-235 EFF. 10/2018

JOB: \_\_\_\_\_  
ENGINEER: \_\_\_\_\_  
ARCHITECT: \_\_\_\_\_  
CONTRACTOR: \_\_\_\_\_

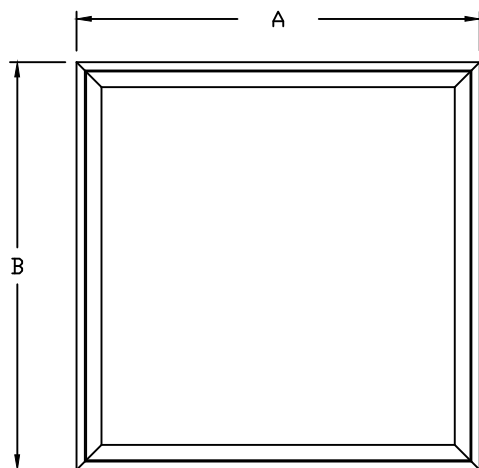


PHONE: 1-800-404-0931 www.precisionairproducts.com

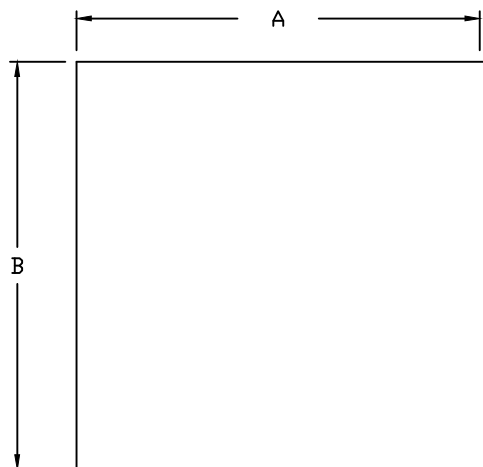
THE ITEMS SHOWN ON THIS DRAWING MAY BE COVERED BY ONE OR MORE PATENTS OF PRECISION AIR PRODUCTS CO. THE DESIGN AND DRAWING ARE THE PROPERTY OF THE CORPORATION AND DUPLICATION IS NOT PERMITTED, EXCEPT WITH WRITTEN CONSENT FROM THE CORPORATION. DIMENSIONS SHOWN ARE SUBJECT TO NORMAL MANUFACTURING TOLERANCES. THIS DRAWING IS FOR SUBMITTAL PURPOSES ONLY AND SUBJECT TO REVISION.

# FILL- IN PANELS WITH SOLID FACE

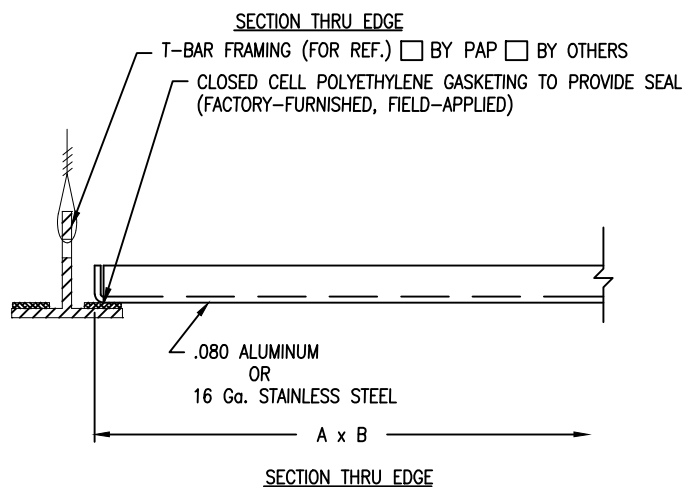
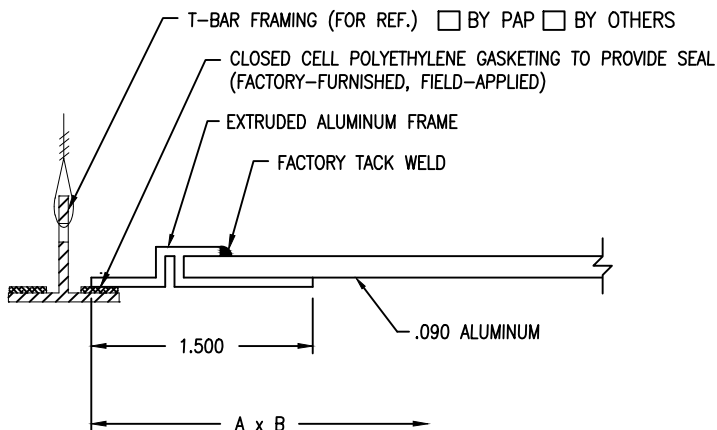
MODEL SFP



FRAMED STYLE



WRAP-AROUND STYLE



## NOTES:

1. INDICATE MATERIAL

- ☐ ALL ALUM.  
☐ ALL 304 S.S.

2. INDICATE FINISH TO MATCH DIFFUSERS:

- ☐ WHITE BAKED ENAMEL ☐ CLEAR ANODIZED ALUM.  
☐ #4 POLISHED S.S.

3. INDICATE FACEPLATE STYLE:

- ☐ FRAMED\* ☐ WRAP-AROUND  
 \* NOT OFFERED IN STAINLESS STEEL

MODEL	'A'	'B'	QNTY	MODEL	'A'	'B'	QNTY	MODEL	'A'	'B'	QNTY
SFP-1212	11.500	11.500		SFP-2424	23.625	23.625		SFP-3636	35.750	35.750	
SFP-1224	11.500	23.625		SFP-2436	23.625	35.750		SFP-3648	35.750	47.875	
SFP-1236	11.500	35.750		SFP-2448	23.625	47.875		SFP-3660	35.750	60.000	
SFP-1248	11.500	47.875		SFP-2460	23.625	60.000		SFP-3672	35.750	72.125	
SFP-1260	11.500	60.000		SFP-2472	23.625	72.125		SFP-4848	47.875	47.875	
SFP-1272	11.500	72.125									

FORM 5-130, EFF. 10/2018

JOB: \_\_\_\_\_  
 ENGINEER: \_\_\_\_\_  
 ARCHITECT: \_\_\_\_\_  
 CONTRACTOR: \_\_\_\_\_



PHONE: 1-800-404-0931 www.precisionairproducts.com

THE ITEMS SHOWN ON THIS DRAWING MAY BE COVERED BY ONE OR MORE PATENTS OF PRECISION AIR PRODUCTS CO. THE DESIGN AND DRAWING ARE THE PROPERTY OF THE CORPORATION AND DUPLICATION IS NOT PERMITTED, EXCEPT WITH WRITTEN CONSENT FROM THE CORPORATION. DIMENSIONS SHOWN ARE SUBJECT TO NORMAL MANUFACTURING TOLERANCES. THIS DRAWING IS FOR SUBMITTAL PURPOSES ONLY AND SUBJECT TO REVISION.