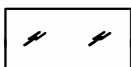
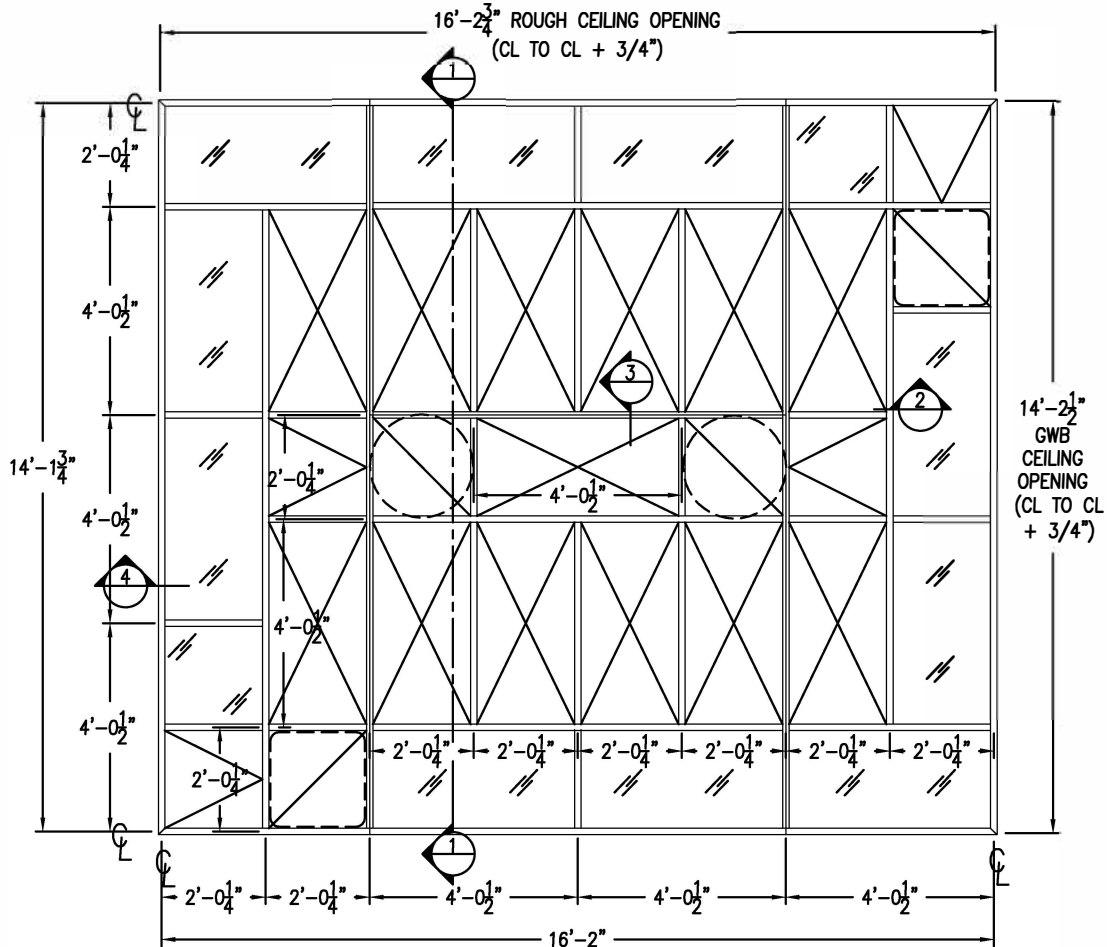


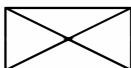
SURGICAIR® FLEX INTEGRATED CEILING SYSTEM

SAMPLE REFLECTED CEILING PLAN W/ 2 LIGHT BOOMS, 1-1/2" TEE

FACTORY-WELDED FRAMING



GRID/LAY-IN/RECESSED SIZE LIGHTING FIXTURE, SUPPLIED BY OTHERS.



LAMI-VENT OR HEPA-VENT DIFFUSER. REFER TO DIFFUSER CUT SHEETS FOR DETAILS.



BLANK-OFF/FILL-IN PANEL. ANY CUTS REQUIRED FOR ACCEPTANCE OF BOOM STRUCTURAL TO BE COMPLETED IN FIELD BY INSTALLING CONTRACTOR. REFER TO FILL-IN PANEL CUT SHEETS FOR DETAILS.



REMOVABLE BLANK-OFF/FILL-IN PANEL FOR BOOM ACCESS.

NOTES:

1. ALL DIMENSIONS TO CENTERLINE OF TEE UNLESS OTHERWISE NOTED.
2. FRAMING TO BE SUPPLIED IN:
 - 2 - 4' x 14' SECTIONS
 - 1 - 8' x 8' SECTIONS
 - 1 - 6' x 8' SECTIONS
3. FINISH: WHITE BAKED ENAMEL
 CLEAR ANODIZED ALUMINUM

FORM 5-121, EFF. 10/2018

JOB: _____
ENGINEER: _____
ARCHITECT: _____
CONTRACTOR: _____



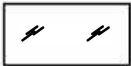
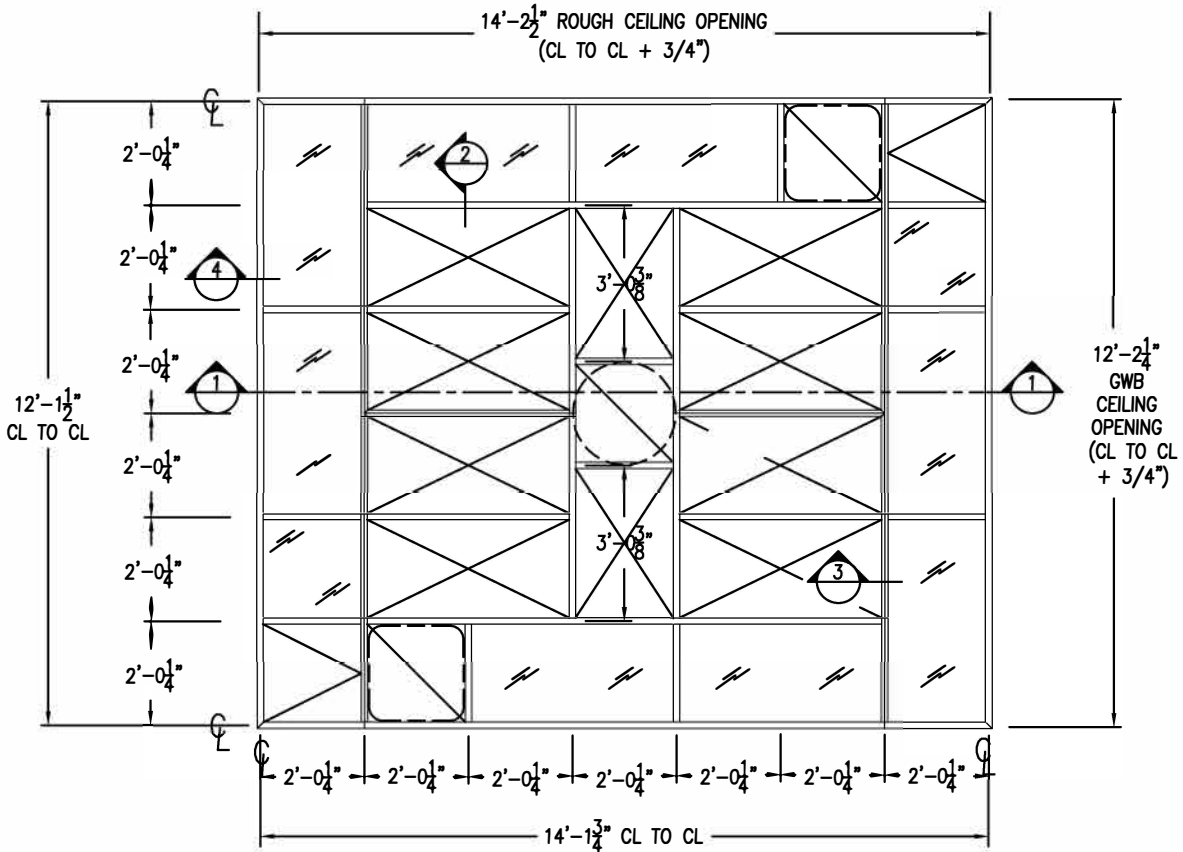
The O.R. AirCare Specialists

PHONE: 1-800-404-0931 www.precisionairproducts.com

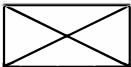
THE ITEMS SHOWN ON THIS DRAWING MAY BE COVERED BY ONE OR MORE PATENTS OF PRECISION AIR PRODUCTS CO. THE DESIGN AND DRAWING ARE THE PROPERTY OF THE CORPORATION AND DUPLICATION IS NOT PERMITTED. EXCEPT WITH WRITTEN CONSENT FROM THE CORPORATION. DIMENSIONS SHOWN ARE SUBJECT TO NORMAL MANUFACTURING TOLERANCES. THIS DRAWING IS FOR SUBMITTAL PURPOSES ONLY AND SUBJECT TO REVISION.

SURGICAIR[®] FLEX INTEGRATED CEILING SYSTEM

SAMPLE REFLECTED CEILING PLAN - CENTER LIGHT BOOM FACTORY-WELDED FRAMING
1-1/2" TEE



GRID/LAY-IN/RECESSED SIZE LIGHTING FIXTURE,
SUPPLIED BY OTHERS.



LAMI-VENT OR HEPA-VENT DIFFUSER.
REFER TO DIFFUSER CUT SHEETS FOR DETAILS.



BLANK-OFF/FILL-IN PANEL. ANY CUTS REQUIRED FOR
ACCEPTANCE OF BOOM STRUCTURAL TO BE
COMPLETED IN FIELD BY INSTALLING CONTRACTOR.
REFER TO FILL-IN PANEL CUT SHEETS FOR DETAILS.



REMOVABLE BLANK-OFF/FILL-IN PANEL FOR BOOM
ACCESS.

NOTES:

- ALL DIMENSIONS TO CENTERLINE OF TEE UNLESS OTHERWISE NOTED.
- FRAMING TO BE SUPPLIED IN:
2 - 2' x 12' SECTIONS
2 - 6' x 10' SECTIONS
- FINISH: WHITE BAKED ENAMEL
 CLEAR ANODIZED ALUMINUM

FORM 5-120, EFF. 10/2018

JOB: _____
ENGINEER: _____
ARCHITECT: _____
CONTRACTOR: _____

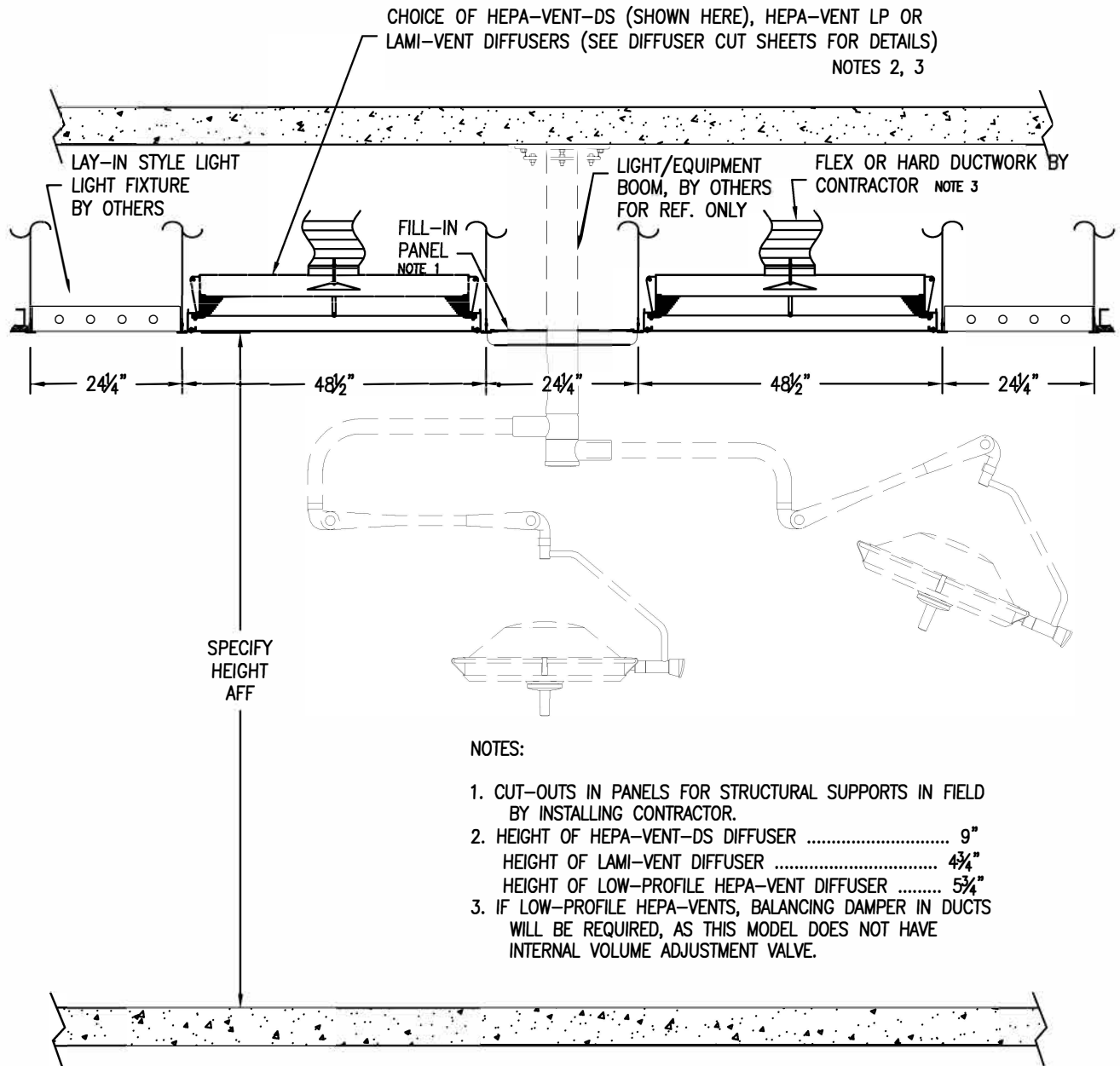


PHONE: 1-800-404-0931 www.precisionairproducts.com

THE ITEMS SHOWN ON THIS DRAWING MAY BE COVERED BY ONE OR MORE PATENTS OF PRECISION AIR PRODUCTS CO. THE DESIGN AND DRAWING ARE THE PROPERTY OF THE CORPORATION AND DUPLICATION IS NOT PERMITTED, EXCEPT WITH WRITTEN CONSENT FROM THE CORPORATION. DIMENSIONS SHOWN ARE SUBJECT TO NORMAL MANUFACTURING TOLERANCES. THIS DRAWING IS FOR SUBMITTAL PURPOSES ONLY AND SUBJECT TO REVISION.

SURGICAIR[®] FLEX INTEGRATED CEILING SYSTEM

SECTION THROUGH CEILING (SAMPLE)



NOTES:

1. CUT-OUTS IN PANELS FOR STRUCTURAL SUPPORTS IN FIELD BY INSTALLING CONTRACTOR.
2. HEIGHT OF HEPA-VENT-DS DIFFUSER 9"
 HEIGHT OF LAMI-VENT DIFFUSER 4 3/4"
 HEIGHT OF LOW-PROFILE HEPA-VENT DIFFUSER 5 3/4"
3. IF LOW-PROFILE HEPA-VENTS, BALANCING DAMPER IN DUCTS WILL BE REQUIRED, AS THIS MODEL DOES NOT HAVE INTERNAL VOLUME ADJUSTMENT VALVE.

1 SECTION THROUGH CEILING

FORM 5-122, EFF. 10/2018

JOB: _____
 ENGINEER: _____
 ARCHITECT: _____
 CONTRACTOR: _____

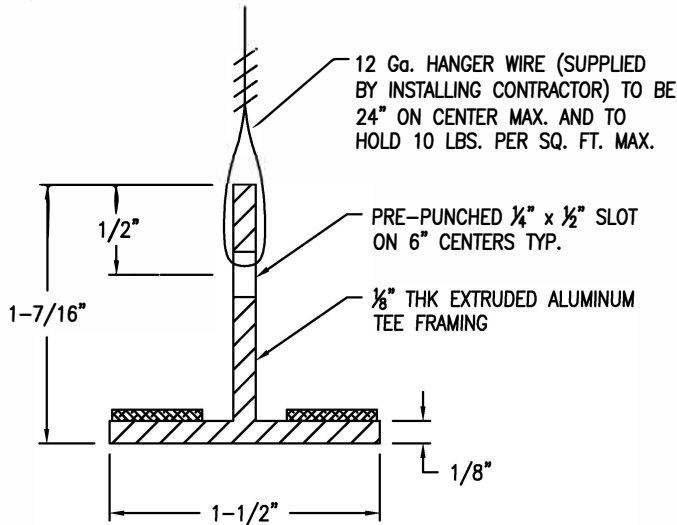


PHONE: 1-800-404-0931 www.precisionairproducts.com

THE ITEMS SHOWN ON THIS DRAWING MAY BE COVERED BY ONE OR MORE PATENTS OF PRECISION AIR PRODUCTS CO. THE DESIGN AND DRAWING ARE THE PROPERTY OF THE CORPORATION AND DUPLICATION IS NOT PERMITTED, EXCEPT WITH WRITTEN CONSENT FROM THE CORPORATION. DIMENSIONS SHOWN ARE SUBJECT TO NORMAL MANUFACTURING TOLERANCES. THIS DRAWING IS FOR SUBMITTAL PURPOSES ONLY AND SUBJECT TO REVISION.

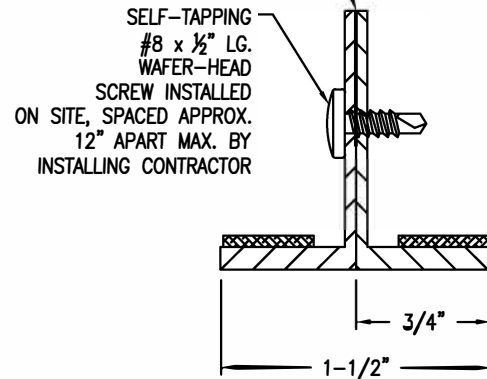
SURGICAIR[®] FLEX & SURGICAIR[®] TRACK INTEGRATED CEILING SYSTEM

1-1/2" WIDE PROFILE SECTIONS

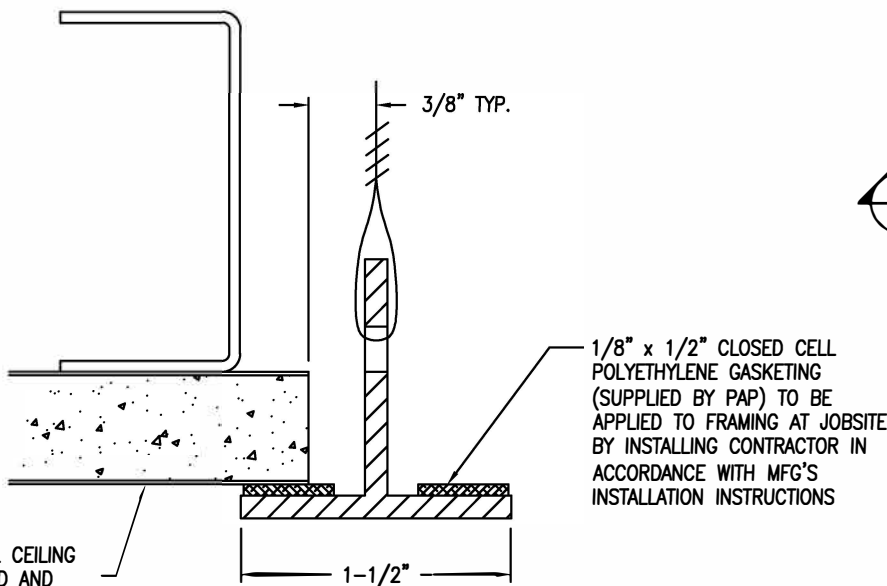


2 TYP. SECTION THRU TEE WIRE HANGER OPTION

WHITE CLOSED-CELL POLYETHYLENE GASKET TAPE 0.75" WD x 0.031" THK. - FURN BY PAP, APPLIED BY CONTR.



3 SECTION AT BUTTING L's



4 SECTION AT FRAMING PERIMETER

FORM 5-132, EFF. 10/2018

JOB: _____
 ENGINEER: _____
 ARCHITECT: _____
 CONTRACTOR: _____

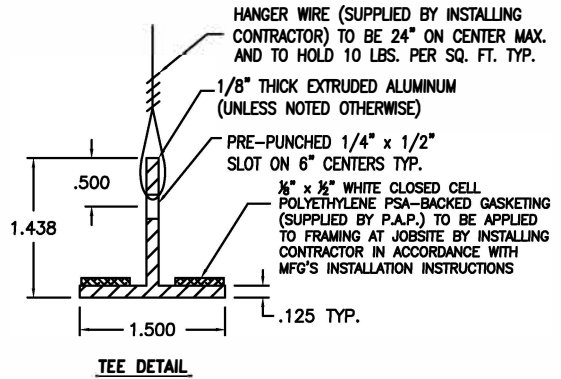
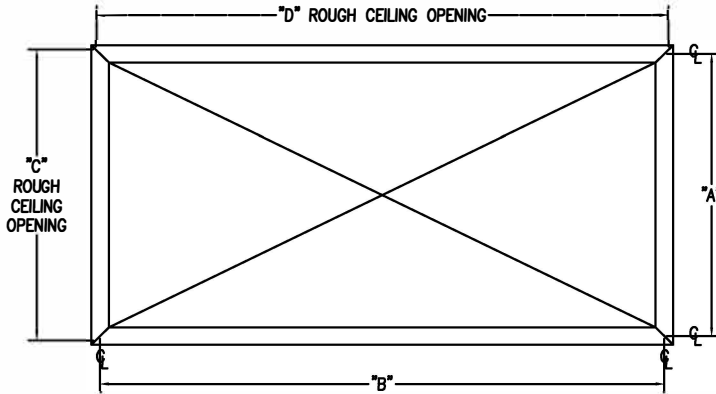


PHONE: 1-800-404-0931 www.precisionairproducts.com

THE ITEMS SHOWN ON THIS DRAWING MAY BE COVERED BY ONE OR MORE PATENTS OF PRECISION AIR PRODUCTS CO. THE DESIGN AND DRAWING ARE THE PROPERTY OF THE CORPORATION AND DUPLICATION IS NOT PERMITTED, EXCEPT WITH WRITTEN CONSENT FROM THE CORPORATION. DIMENSIONS SHOWN ARE SUBJECT TO NORMAL MANUFACTURING TOLERANCES. THIS DRAWING IS FOR SUBMITTAL PURPOSES ONLY AND SUBJECT TO REVISION.

SURGICAIR[®] FLEX

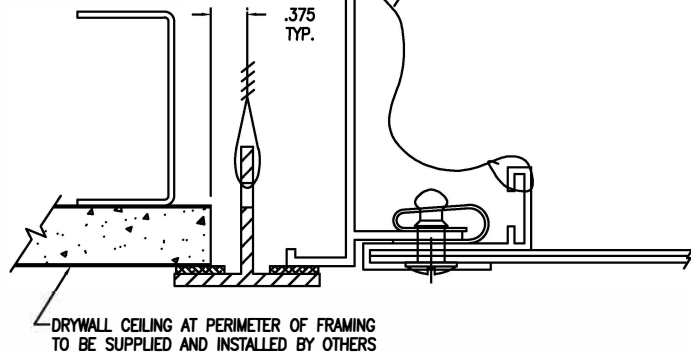
INDIVIDUAL PLASTER FRAME



PLASTER FRAME DIMENSIONS (in.)					
MODEL	'A'	'B'	'C'	'D'	QNTY.
PLFW-1212	12.125	12.125	12.875	12.875	
PLFW-1224	12.125	24.250	12.875	25.000	
PLFW-1236	12.125	36.375	12.875	37.125	
PLFW-1248	12.125	48.500	12.875	49.250	
PLFW-1260	12.125	60.625	12.875	61.375	
PLFW-1272	12.125	72.750	12.875	73.500	
PLFW-2424	24.250	24.250	25.000	25.000	
PLFW-2436	24.250	36.375	25.000	37.125	
PLFW-2448	24.250	48.500	25.000	49.250	
PLFW-2460	24.250	60.625	25.000	61.375	
PLFW-2472	24.250	72.750	25.000	73.500	
PLFW-3636	36.375	36.375	37.125	37.125	
PLFW-3648	36.375	48.500	37.125	49.250	
PLFW-3660	36.375	60.625	37.125	61.375	

NOTES:

- INDICATE MATERIAL / FINISH:
 - 0 = ALUMINUM / WHITE BAKED ENAMEL
 - 1 = ALUMINUM / 204-R1 CLEAR ANODIZED
 - 2 = 16 GA. 304 STAINLESS STEEL / No. 4 POLISH
- ALL DIMENSIONS SHOWN IN INCHES.



FORM 5-134, EFFECTIVE 10/2018

JOB: _____
 ENGINEER: _____
 ARCHITECT: _____
 CONTRACTOR: _____

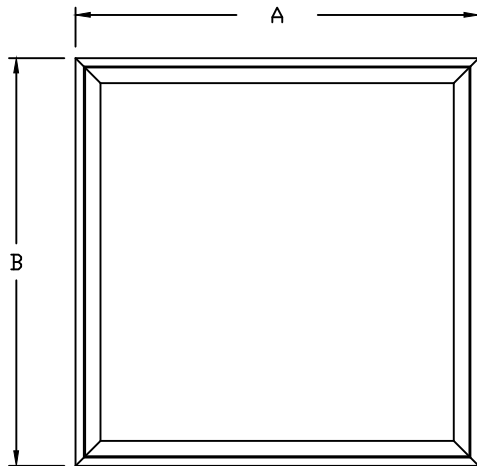


PHONE: 1-800-404-0931 www.precisionairproducts.com

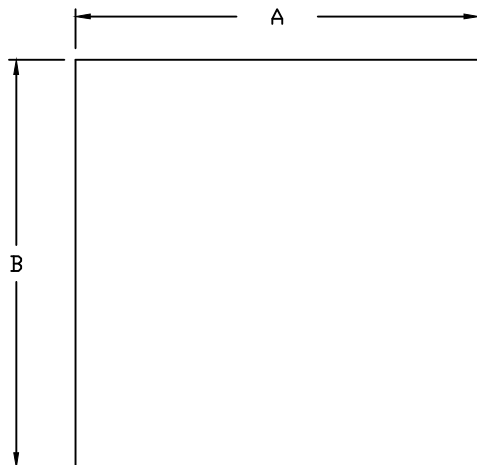
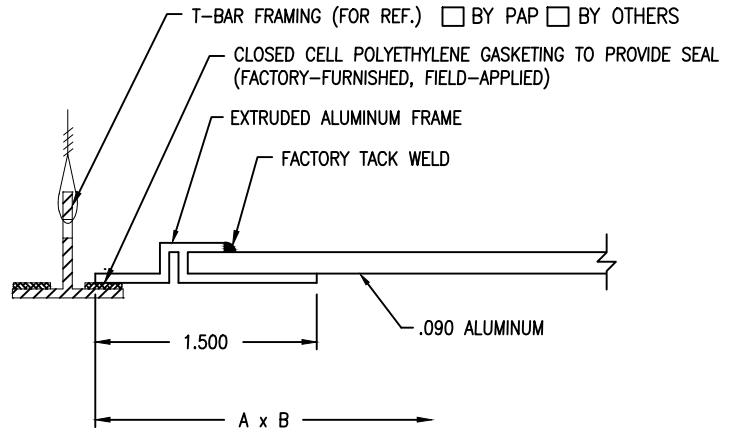
THE ITEM SHOWN ON THIS DRAWING MAY BE COVERED BY ONE OR MORE PATENTS OF PRECISION AIR PRODUCTS CO. THE DESIGN AND DRAWING ARE THE PROPERTY OF THE CORPORATION AND DUPLICATION IS NOT PERMITTED EXCEPT WITH WRITTEN CONSENT FROM THE CORPORATION. DIMENSIONS SHOWN ARE SUBJECT TO NORMAL MANUFACTURING TOLERANCES. THIS DRAWING IS FOR SUBMITTAL PURPOSES ONLY AND SUBJECT TO REVISION.

FILL- IN PANELS WITH SOLID FACE

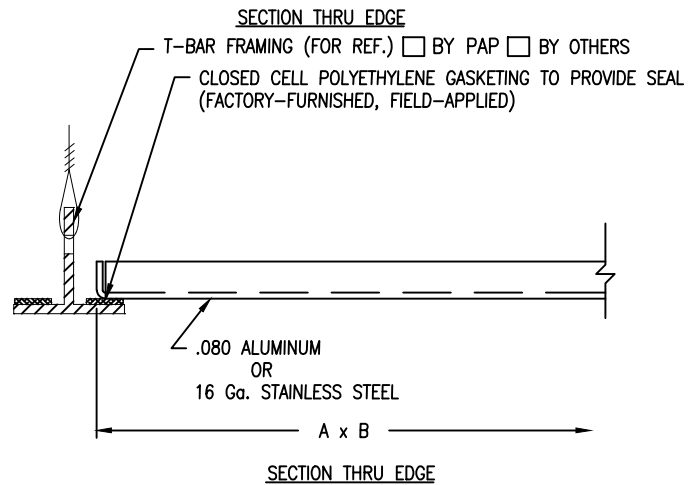
MODEL SFP



FRAMED STYLE



WRAP-AROUND STYLE



NOTES:

- INDICATE MATERIAL
 ALL ALUM.
 ALL 304 S.S.
- INDICATE FINISH TO MATCH DIFFUSERS:
 WHITE BAKED ENAMEL CLEAR ANODIZED ALUM.
 #4 POLISHED S.S.
- INDICATE FACEPLATE STYLE:
 FRAMED* WRAP-AROUND
 * NOT OFFERED IN STAINLESS STEEL

MODEL	'A'	'B'	QNTY	MODEL	'A'	'B'	QNTY	MODEL	'A'	'B'	QNTY
SFP-1212	11.500	11.500		SFP-2424	23.625	23.625		SFP-3636	35.750	35.750	
SFP-1224	11.500	23.625		SFP-2436	23.625	35.750		SFP-3648	35.750	47.875	
SFP-1236	11.500	35.750		SFP-2448	23.625	47.875		SFP-3660	35.750	60.000	
SFP-1248	11.500	47.875		SFP-2460	23.625	60.000		SFP-3672	35.750	72.125	
SFP-1260	11.500	60.000		SFP-2472	23.625	72.125		SFP-4848	47.875	47.875	
SFP-1272	11.500	72.125									

FORM 5-130, EFF. 10/2018

JOB: _____
 ENGINEER: _____
 ARCHITECT: _____
 CONTRACTOR: _____



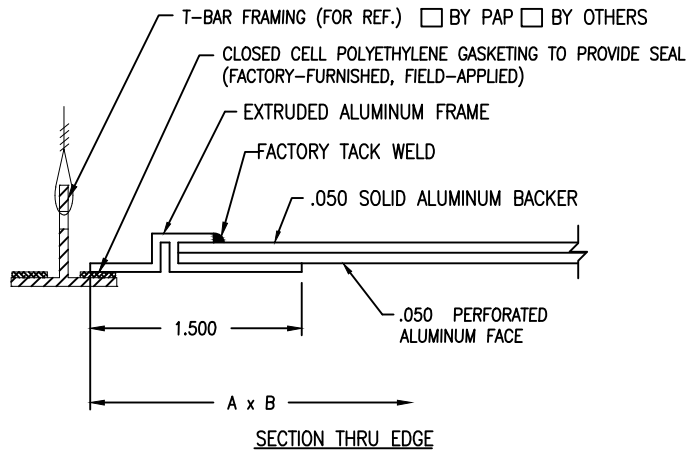
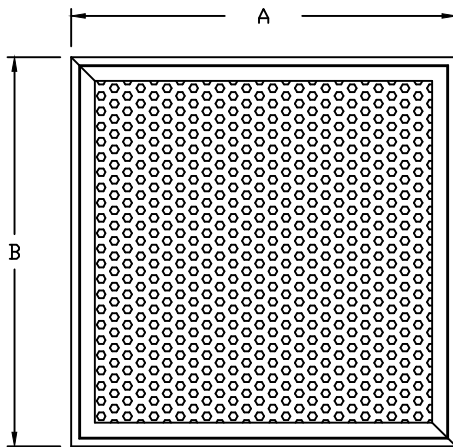
PHONE: 1-800-404-0931 www.precisionairproducts.com

THE ITEMS SHOWN ON THIS DRAWING MAY BE COVERED BY ONE OR MORE PATENTS OF PRECISION AIR PRODUCTS CO. THE DESIGN AND DRAWING ARE THE PROPERTY OF THE CORPORATION AND DUPLICATION IS NOT PERMITTED, EXCEPT WITH WRITTEN CONSENT FROM THE CORPORATION. DIMENSIONS SHOWN ARE SUBJECT TO NORMAL MANUFACTURING TOLERANCES. THIS DRAWING IS FOR SUBMITTAL PURPOSES ONLY AND SUBJECT TO REVISION.

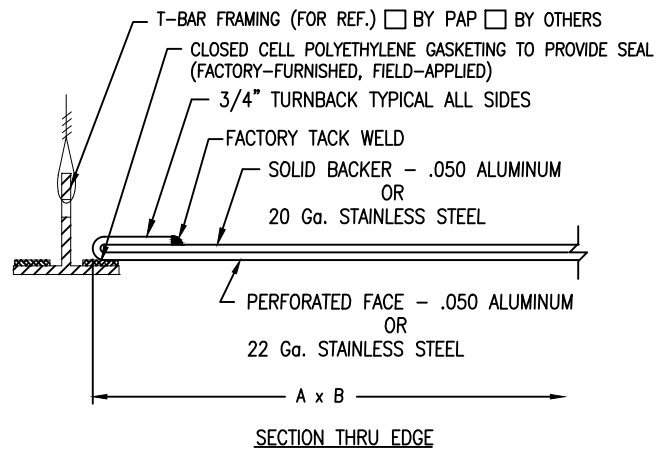
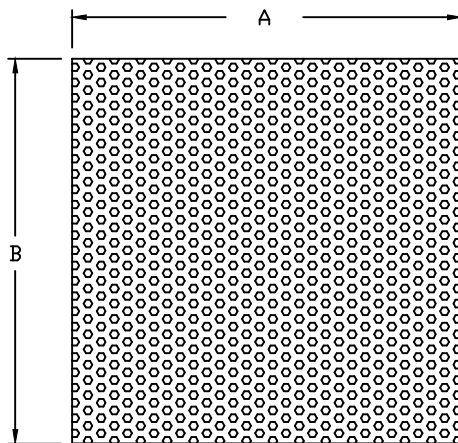
FILL-IN PANELS

WITH PERFORATED FACE

MODEL PFP



FRAMED STYLE, TO MATCH DIFFUSERS WITH FRAMED STYLE FACEPLATE



WRAP-AROUND STYLE, TO MATCH DIFFUSERS WITH WRAP AROUND STYLE FACEPLATE

NOTES:

1. INDICATE MATERIAL
 ALL ALUM.
 ALL 304 S.S.
2. INDICATE FINISH TO MATCH DIFFUSERS:
 WHITE BAKED ENAMEL CLEAR ANODIZED
 #4 POLISHED S.S.
3. INDICATE FACEPLATE STYLE:
 FRAMED* WRAP-AROUND
 * NOT OFFERED IN STAINLESS STEEL
4. INDICATE PERFORATION PATTERN REQUIRED:
 16% OPEN TO MATCH A-SERIES DIFFUSERS
 23% OPEN TO MATCH B-SERIES DIFFUSERS
 33% OPEN TO MATCH C-D-E SERIES DIFFUSERS

MODEL	'A'	'B'	QNTY	MODEL	'A'	'B'	QNTY	MODEL	'A'	'B'	QNTY
PFP-1212	11.500	11.500		PFP-2424	23.625	23.625		PFP-3636	35.750	35.750	
PFP-1224	11.500	23.625		PFP-2436	23.625	35.750		PFP-3648	35.750	47.875	
PFP-1236	11.500	35.750		PFP-2448	23.625	47.875		PFP-3660	35.750	60.000	
PFP-1248	11.500	47.875		PFP-2460	23.625	60.000		PFP-3672	35.750	72.125	
PFP-1260	11.500	60.000		PFP-2472	23.625	72.125		PFP-4848	47.875	47.875	
PFP-1272	11.500	72.125									

FORM 5-131, EFF. 10/2018

JOB: _____
 ENGINEER: _____
 ARCHITECT: _____
 CONTRACTOR: _____

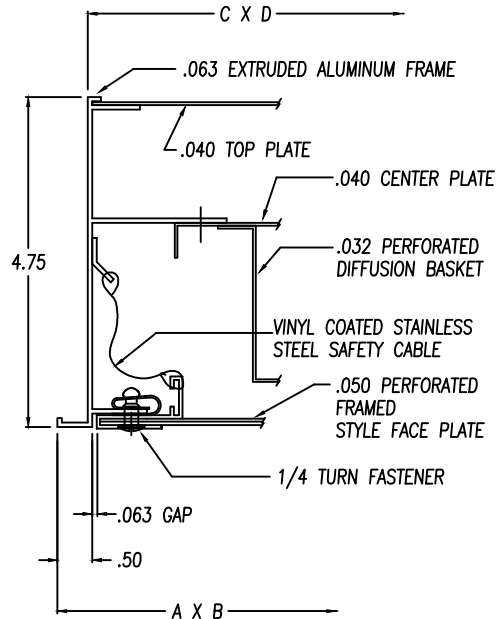
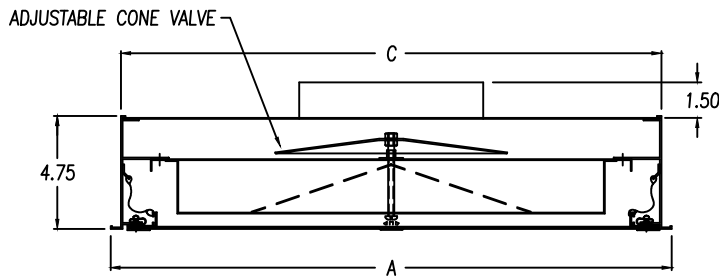
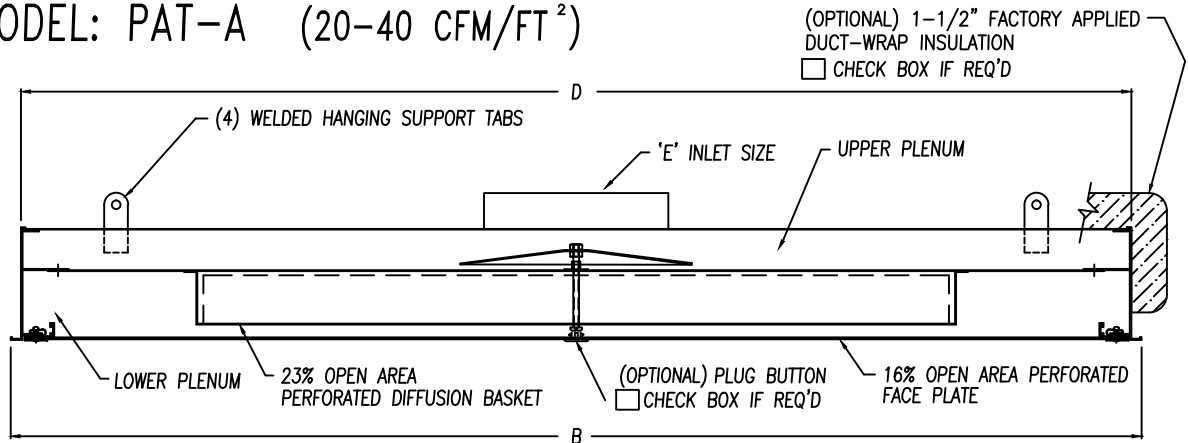


PHONE: 1-800-404-0931 www.precisionairproducts.com

THE ITEMS SHOWN ON THIS DRAWING MAY BE COVERED BY ONE OR MORE PATENTS OF PRECISION AIR PRODUCTS CO. THE DESIGN AND DRAWING ARE THE PROPERTY OF THE CORPORATION AND DUPLICATION IS NOT PERMITTED, EXCEPT WITH WRITTEN CONSENT FROM THE CORPORATION. DIMENSIONS SHOWN ARE SUBJECT TO NORMAL MANUFACTURING TOLERANCES. THIS DRAWING IS FOR SUBMITTAL PURPOSES ONLY AND SUBJECT TO REVISION.

LAMI-VENT™

MODEL: PAT-A (20-40 CFM/FT²)



MODULE DIMENSIONS (in.)						
MODEL	'A'	'B'	'C'	'D'	'E'	QNTY.
PAT-1212-A	11.500	11.500	10.625	10.625	ø5.75	
PAT-1224-A	11.500	23.625	10.625	22.750	ø5.75	
PAT-1236-A	11.500	35.750	10.625	34.875	ø5.75	
PAT-1248-A	11.500	47.875	10.625	47.000	ø5.75	
PAT-1260-A	11.500	60.000	10.625	59.125	ø7.75	
PAT-1272-A	11.500	72.125	10.625	71.250	ø7.75	
PAT-2424-A	23.625	23.625	22.750	22.750	ø7.75	
					ø9.75	
PAT-2436-A	23.625	35.750	22.750	34.875	ø7.75	
					ø9.75	
PAT-2448-A	23.625	47.875	22.750	47.000	ø7.75	
					ø9.75	
					ø11.75	
PAT-2460-A	23.625	60.000	22.750	59.125	ø9.75	
PAT-2472-A	23.625	72.125	22.750	71.250	ø9.75	
PAT-3636-A	35.750	35.750	34.875	34.875	ø9.75	
PAT-3648-A	35.750	47.875	34.875	47.000	ø9.75	
PAT-3660-A	35.750	60.000	34.875	59.125	ø11.75	

NOTES:

- INDICATE FACEPLATE STYLE:
 F = FRAMED * W = WRAP-AROUND
 * NOT OFFERED IN STAINLESS STEEL
- INDICATE MATERIAL / FINISH:
 0 = ALUMINUM / WHITE BAKED ENAMEL
 1 = ALUMINUM / CLEAR ANODIZED
 2 = ALUMINUM / CLEAR ANODIZED WITH 304 SST FACEPLATE / No. 4 POLISH
 3 = 304 STAINLESS STEEL / No. 4 POLISH ON ROOM-SIDE SURFACES
 4 = ALUMINUM DIFFUSER / WHITE BAKED ENAMEL WITH 304 SST FACEPLATE / No. 4 POLISH
- ALL DIMENSIONS SHOWN IN INCHES.

FORM 4-120, EFFECTIVE 10/2018

JOB: _____
 ENGINEER: _____
 ARCHITECT: _____
 CONTRACTOR: _____



PHONE: 1-800-404-0931 www.precisionairproducts.com

THE ITEMS SHOWN ON THIS DRAWING MAY BE COVERED BY ONE OR MORE PATENTS OF PRECISION AIR PRODUCTS CO. THE DESIGN AND DRAWING ARE THE PROPERTY OF THE CORPORATION AND DUPLICATION IS NOT PERMITTED, EXCEPT WITH WRITTEN CONSENT FROM THE CORPORATION. DIMENSIONS SHOWN ARE SUBJECT TO NORMAL MANUFACTURING TOLERANCES. THIS DRAWING IS FOR SUBMITTAL PURPOSES ONLY AND SUBJECT TO REVISION.