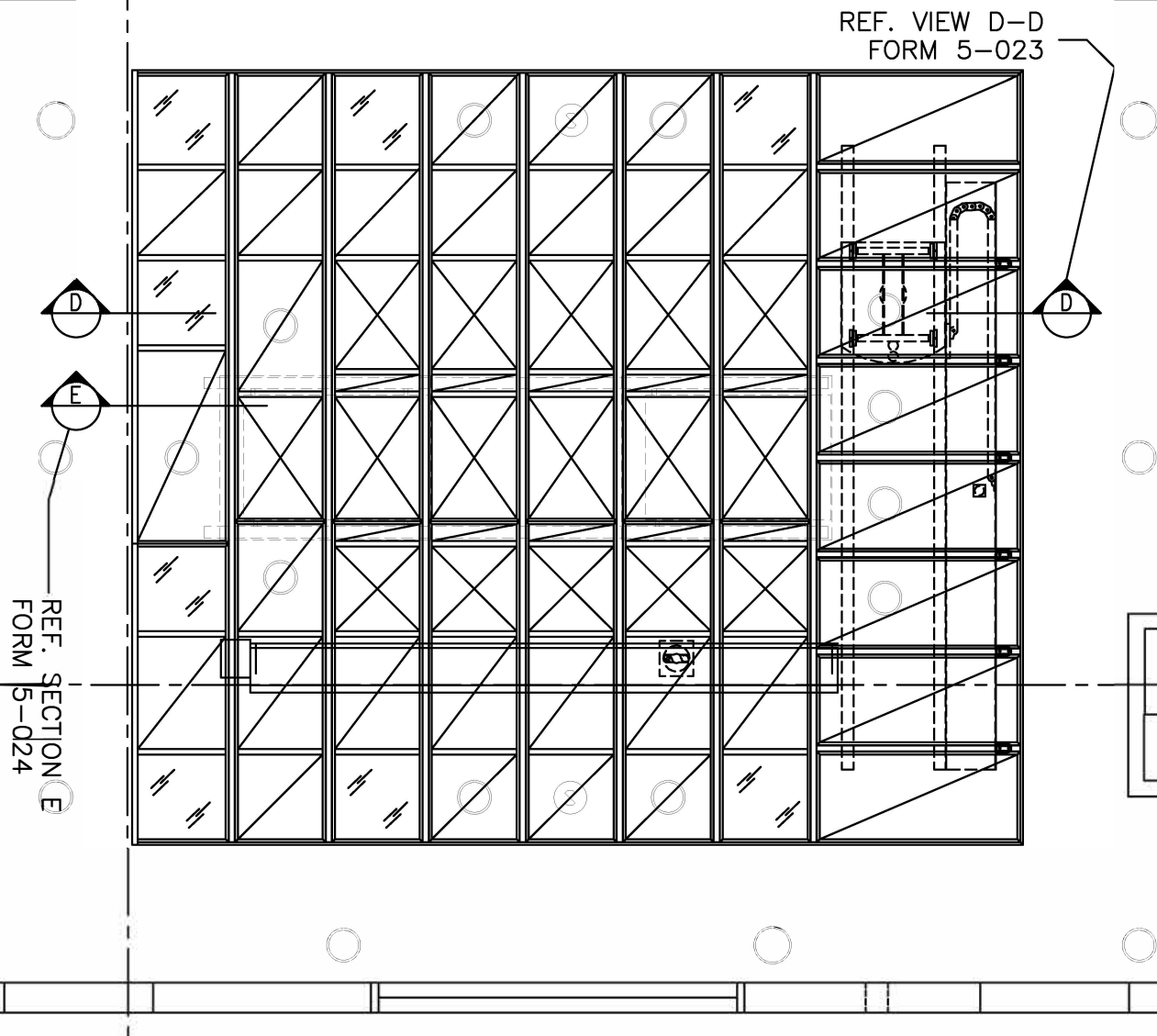


# SURGICAIR® TRACK INTEGRATED CEILING SYSTEM

SAMPLE REFLECTED CEILING PLAN  
MEDICAL EQUIPMENT SHOWN

FACTORY WELDED FRAMING



#### NOTES:

1. MEDICAL EQUIPMENT RAILS / CARRIAGES (BY OTHERS) SHOWN FOR REFERENCE.
2. OVERALL SIZE OF SYSTEM & DIFFUSER AND FILL-IN PANEL LOCATIONS ARE BASED ON EQUIPMENT LOCATIONS.
3. CONTACT PAF FOR PRELIMINARY DESIGN ASSISTANCE.
4. DIFFUSER LOCATIONS MUST NOT OVERLAP EQUIPMENT RAILS PREVENTING FACEPLATES FROM OPENING.

FORM 5-020, EFFECTIVE 10/2018

JOB: \_\_\_\_\_  
ENGINEER: \_\_\_\_\_  
ARCHITECT: \_\_\_\_\_  
CONTRACTOR: \_\_\_\_\_



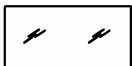
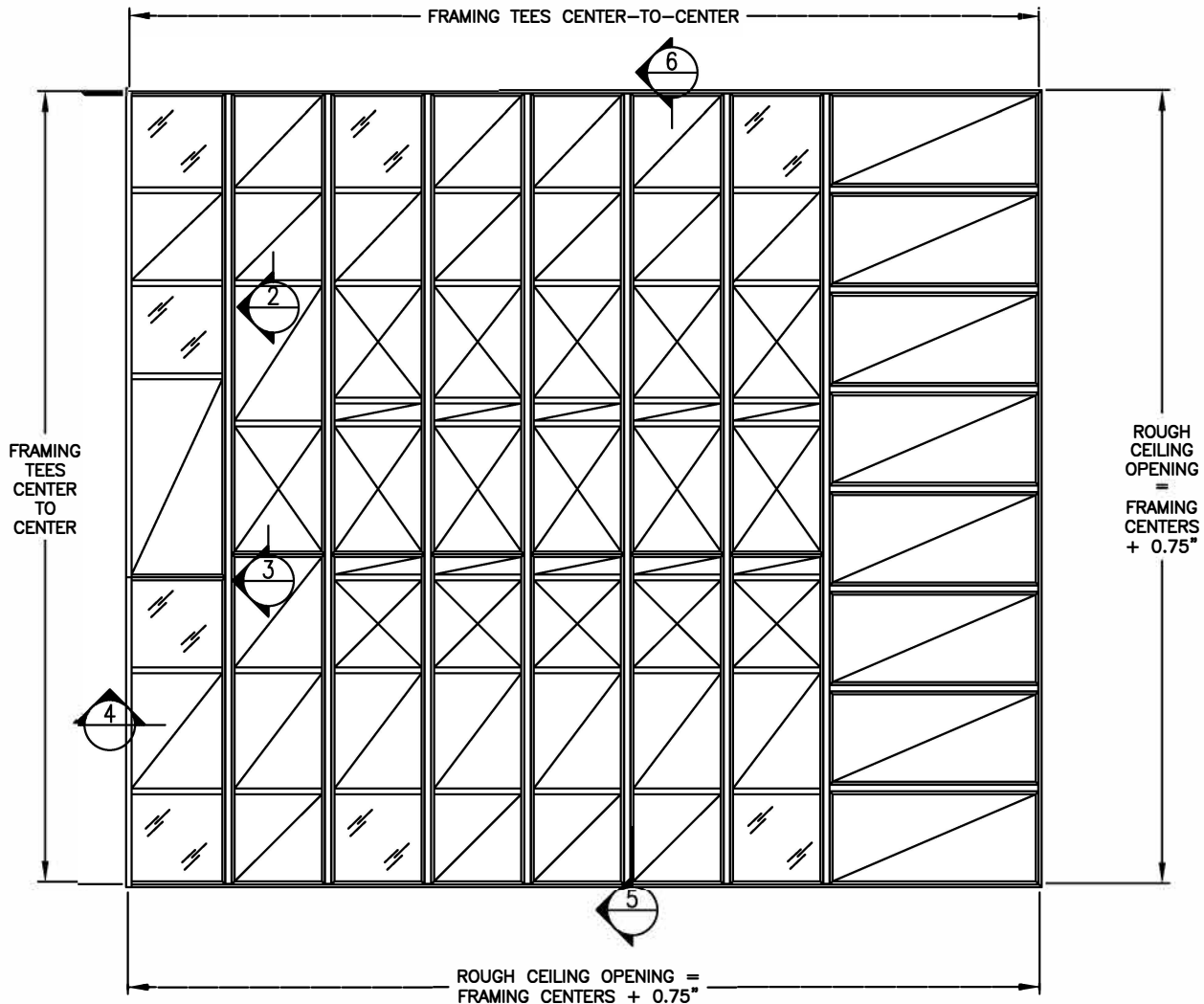
PHONE: 1-800-404-0931 [www.precisionairproducts.com](http://www.precisionairproducts.com)

THE ITEMS SHOWN ON THIS DRAWING MAY BE COVERED BY ONE OR MORE PATENTS OF PRECISION AIR PRODUCTS CO. THE DESIGN AND DRAWING ARE THE PROPERTY OF THE CORPORATION AND DUPLICATION IS NOT PERMITTED, EXCEPT WITH WRITTEN CONSENT FROM THE CORPORATION. DIMENSIONS SHOWN ARE SUBJECT TO NORMAL MANUFACTURING TOLERANCES. THIS DRAWING IS FOR SUBMITTAL PURPOSES ONLY AND SUBJECT TO REVISION.

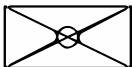
# SURGICAIR® TRACK INTEGRATED CEILING SYSTEM

SAMPLE REFLECTED CEILING PLAN  
NO EQUIPMENT SHOWN

FACTORY WELDED FRAMING



INDICATES TYPICAL LOCATION OF FLUORESCENT LIGHTING FIXTURE, SUPPLIED BY OTHERS.



INDICATES TYPICAL LOCATION OF LAMI-VENT OR HEPA-VENT DIFFUSER. REFER TO DIFFUSER CUT SHEETS FOR DETAILS.



INDICATES TYPICAL LOCATION OF FILL-IN PANEL, ANY CUT-OUTS REQUIRED IN PANEL TO BE DONE AT JOB-SITE BY INSTALLING CONTRACTOR. REFER TO FILL-IN PANEL CUT SHEETS FOR DETAILS.

#### NOTES:

1. FRAMING TO BE SUPPLIED IN CUSTOM SIZE FACTORY-WELDED SECTIONS TO FIT BETWEEN CEILING-LEVEL UNISTRUT.

FORM 5-021, EFFECTIVE 10/2018

JOB: \_\_\_\_\_  
ENGINEER: \_\_\_\_\_  
ARCHITECT: \_\_\_\_\_  
CONTRACTOR: \_\_\_\_\_



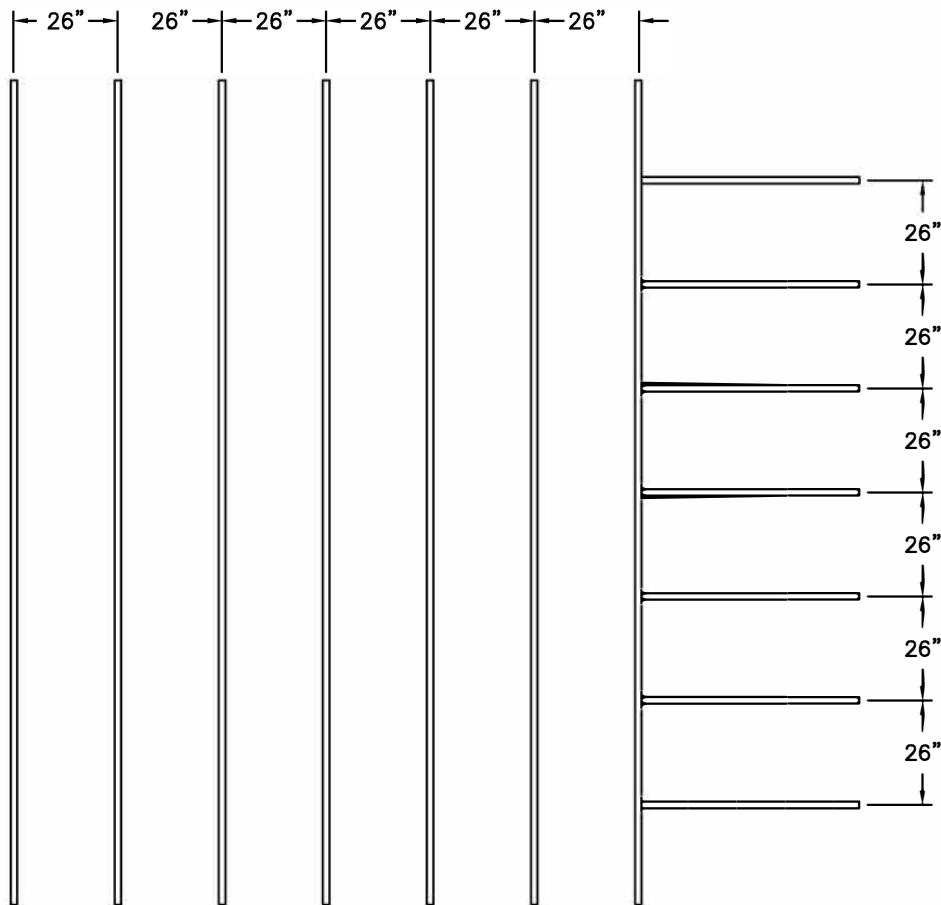
The O.R. AirCare Specialists

PHONE: 1-800-404-0931 www.precisionairproducts.com

THE ITEMS SHOWN ON THIS DRAWING MAY BE COVERED BY ONE OR MORE PATENTS OF PRECISION AIR PRODUCTS CO. THE DESIGN AND DRAWING ARE THE PROPERTY OF THE CORPORATION AND DUPLICATION IS NOT PERMITTED, EXCEPT WITH WRITTEN CONSENT FROM THE CORPORATION. DIMENSIONS SHOWN ARE SUBJECT TO NORMAL MANUFACTURING TOLERANCES. THIS DRAWING IS FOR SUBMITTAL PURPOSES ONLY AND SUBJECT TO REVISION.

# SURGICAIR® TRACK INTEGRATED CEILING SYSTEM

## SAMPLE CEILING-LEVEL UNISTRUT LAYOUT



### NOTE:

1. UNISTRUT LAYOUT SHOWN IS FOR EXAMPLE ONLY. UNISTRUT SPACING TO BE DETERMINED BY MEDICAL EQUIPMENT MANUFACTURER. ARCHITECT/ENGINEER TO REFERENCE MEDICAL EQUIPMENT MANUFACTURERS' SITE-SPECIFIC STRUCTURAL DRAWINGS.
2. TO LOCATE GRID STYLE NOMINAL 24"x24" SIZE FLUORESCENT LIGHT WITHIN STRUT, SPACING OF STRUT MUST BE 26.00  $\pm 0.25$ ".
3. PAP TO ADVISE APPROXIMATE WEIGHT OF INTEGRATED CEILING SYSTEM FOR STRUCTURAL ENGINEER'S LOAD CALCULATIONS.

FORM 5-022, EFFECTIVE 10/2018

JOB: \_\_\_\_\_  
ENGINEER: \_\_\_\_\_  
ARCHITECT: \_\_\_\_\_  
CONTRACTOR: \_\_\_\_\_



**Precision Air**

*The O.R. AirCare Specialists*

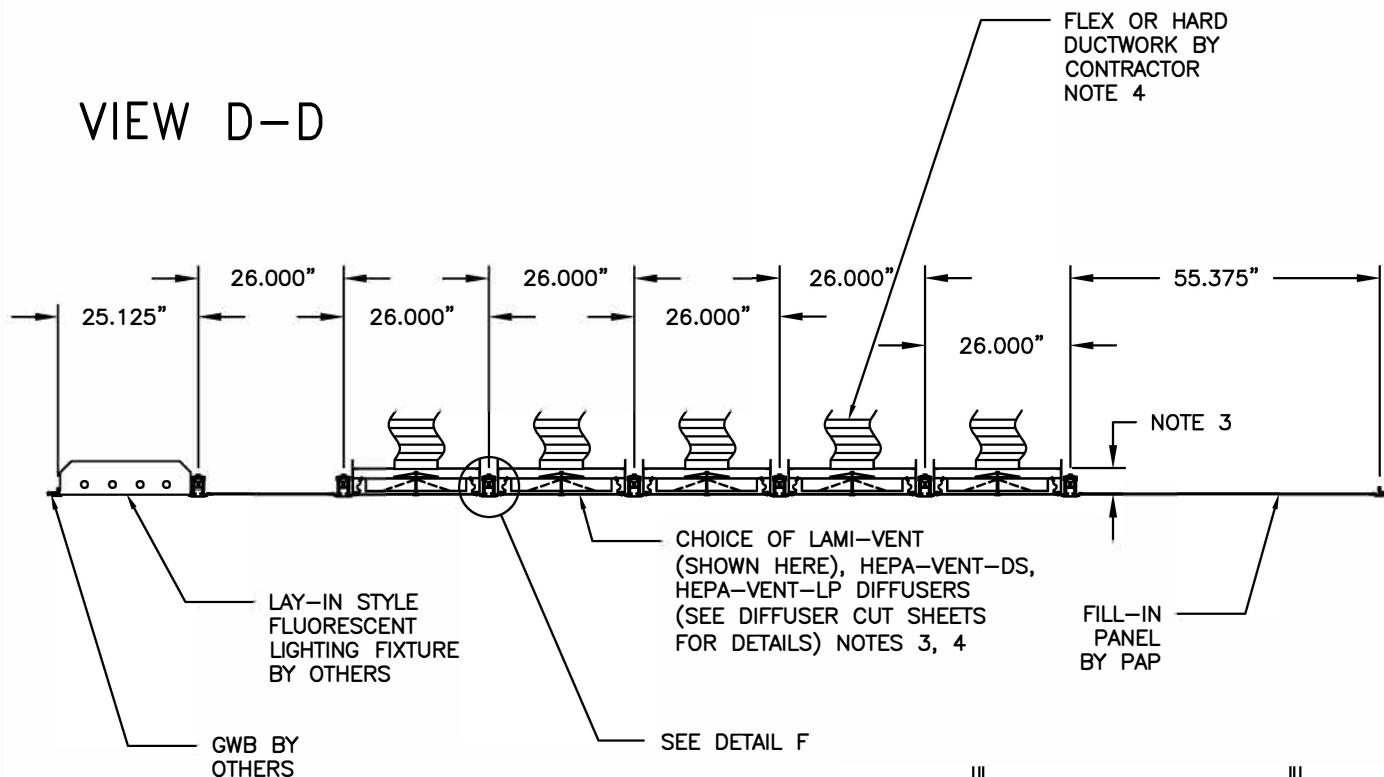
PHONE: 1-800-404-0931 [www.precisionairproducts.com](http://www.precisionairproducts.com)

THE ITEMS SHOWN ON THIS DRAWING MAY BE COVERED BY ONE OR MORE PATENTS OF PRECISION AIR PRODUCTS CO. THE DESIGN AND DRAWING ARE THE PROPERTY OF THE CORPORATION AND DUPLICATION IS NOT PERMITTED, EXCEPT WITH WRITTEN CONSENT FROM THE CORPORATION. DIMENSIONS SHOWN ARE SUBJECT TO NORMAL MANUFACTURING TOLERANCES. THIS DRAWING IS FOR SUBMITTAL PURPOSES ONLY AND SUBJECT TO REVISION.

# SURGICAIR® TRACK INTEGRATED CEILING SYSTEM

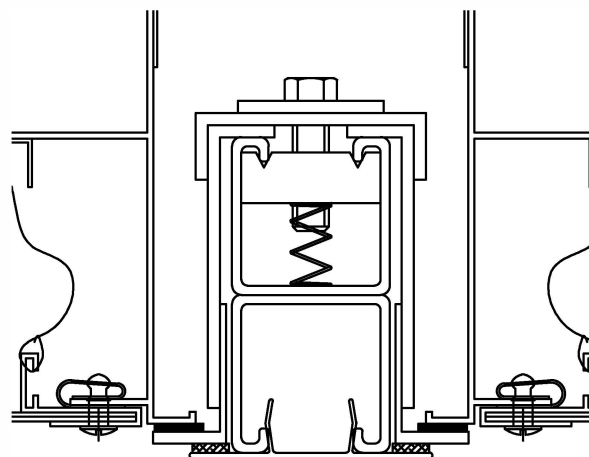
## SECTION THROUGH CEILING (SAMPLE)

VIEW D-D



### NOTES:

1. SUPPORT METHOD OF STRUCTURAL STEEL AT CEILING LEVEL TO BE DETERMINED BY OTHERS.
2. SUPPORT SUB-STRUCTURE STRUCTURAL STEEL ABOVE CEILING LEVEL SUPPLIED & LOCATED BY OTHERS. CONFIRM LOCATION TO ENSURE NO INTERFERENCE WITH DIFFUSERS & LIGHTING.
3. HEIGHT OF HEPA-VENT-DS DIFFUSER.....9"  
HEIGHT OF LAMI-VENT DIFFUSER.....4¾"  
HEIGHT OF LOW-PROFILE HEPA-VENT DIFFUSER.....5¾"
4. IF LOW-PROFILE HEPA-VENTS ARE USED, CONTRACTORS MUST FURNISH BALANCING DAMPER IN FLEXIBLE DUCT, AS THIS MODEL DOES NOT HAVE ADJUSTMENT VALVE IN DIFFUSER.



DETAIL F

REFER TO SECTION E FOR DETAIL NOTES

FORM 5-023, EFFECTIVE 10/2018

JOB: \_\_\_\_\_  
ENGINEER: \_\_\_\_\_  
ARCHITECT: \_\_\_\_\_  
CONTRACTOR: \_\_\_\_\_

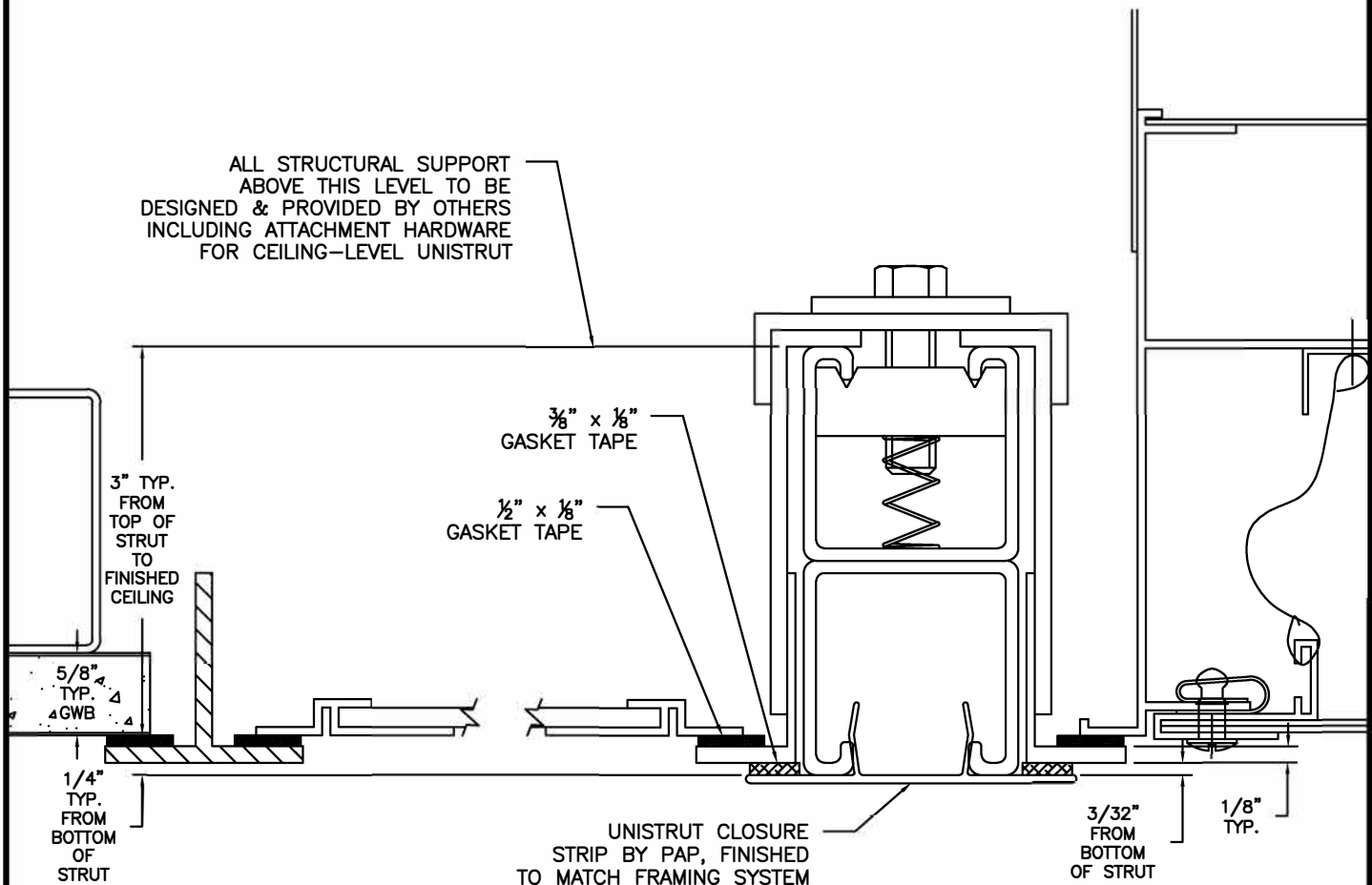


PHONE: 1-800-404-0931 www.precisionairproducts.com

THE ITEMS SHOWN ON THIS DRAWING MAY BE COVERED BY ONE OR MORE PATENTS OF PRECISION AIR PRODUCTS CO. THE DESIGN AND DRAWING ARE THE PROPERTY OF THE CORPORATION AND DUPLICATION IS NOT PERMITTED, EXCEPT WITH WRITTEN CONSENT FROM THE CORPORATION. DIMENSIONS SHOWN ARE SUBJECT TO NORMAL MANUFACTURING TOLERANCES. THIS DRAWING IS FOR SUBMITTAL PURPOSES ONLY AND SUBJECT TO REVISION.

# SURGICAIR® TRACK INTEGRATED CEILING SYSTEM

## UNISTRUT / CEILING FRAMING SECTION DETAIL



## SECTION E

### NOTE:

1. THE BOTTOM OF THE STRUCTURAL SUPPORT SYSTEM TO WHICH THE UNISTRUT IS TO BE ATTACHED MUST BE INSTALLED TO WITHIN ALLOWABLE ELEVATION TOLERANCES SPECIFIED WITHIN THE EQUIPMENT MANUFACTURER'S DRAWINGS. REFER TO STRUCTURAL DETAILS AND NOTES IN THE MOST CURRENT SET OF THE EQUIPMENT MANUFACTURER'S SITE-SPECIFIC DRAWINGS FOR STRUCTURAL SUPPORT DESIGN CRITERIA AND ALLOWABLE INSTALLATION TOLERANCES.

FORM 5-024, EFFECTIVE 10/2018

JOB: \_\_\_\_\_  
ENGINEER: \_\_\_\_\_  
ARCHITECT: \_\_\_\_\_  
CONTRACTOR: \_\_\_\_\_

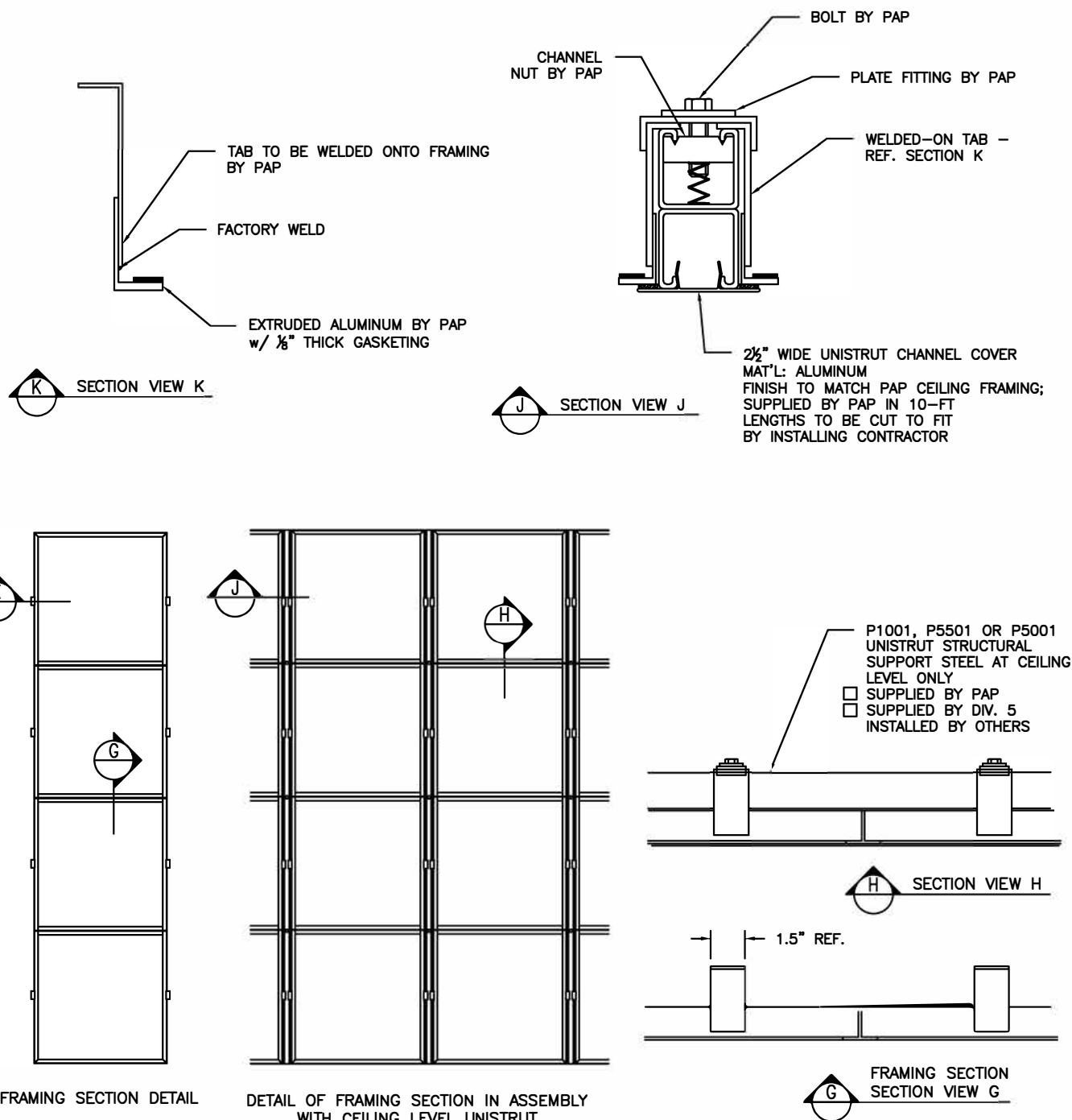


PHONE: 1-800-404-0931 [www.precisionairproducts.com](http://www.precisionairproducts.com)

THE ITEMS SHOWN ON THIS DRAWING MAY BE COVERED BY ONE OR MORE PATENTS OF PRECISION AIR PRODUCTS CO. THE DESIGN AND DRAWING ARE THE PROPERTY OF THE CORPORATION AND DUPLICATION IS NOT PERMITTED, EXCEPT WITH WRITTEN CONSENT FROM THE CORPORATION. DIMENSIONS SHOWN ARE SUBJECT TO NORMAL MANUFACTURING TOLERANCES. THIS DRAWING IS FOR SUBMITTAL PURPOSES ONLY AND SUBJECT TO REVISION.

# SURGICAIR® TRACK INTEGRATED CEILING SYSTEM

## FRAMING SYSTEM DETAILS



FORM 5-025, EFFECTIVE 10/2018

JOB: \_\_\_\_\_

ENGINEER: \_\_\_\_\_

ARCHITECT: \_\_\_\_\_

CONTRACTOR: \_\_\_\_\_

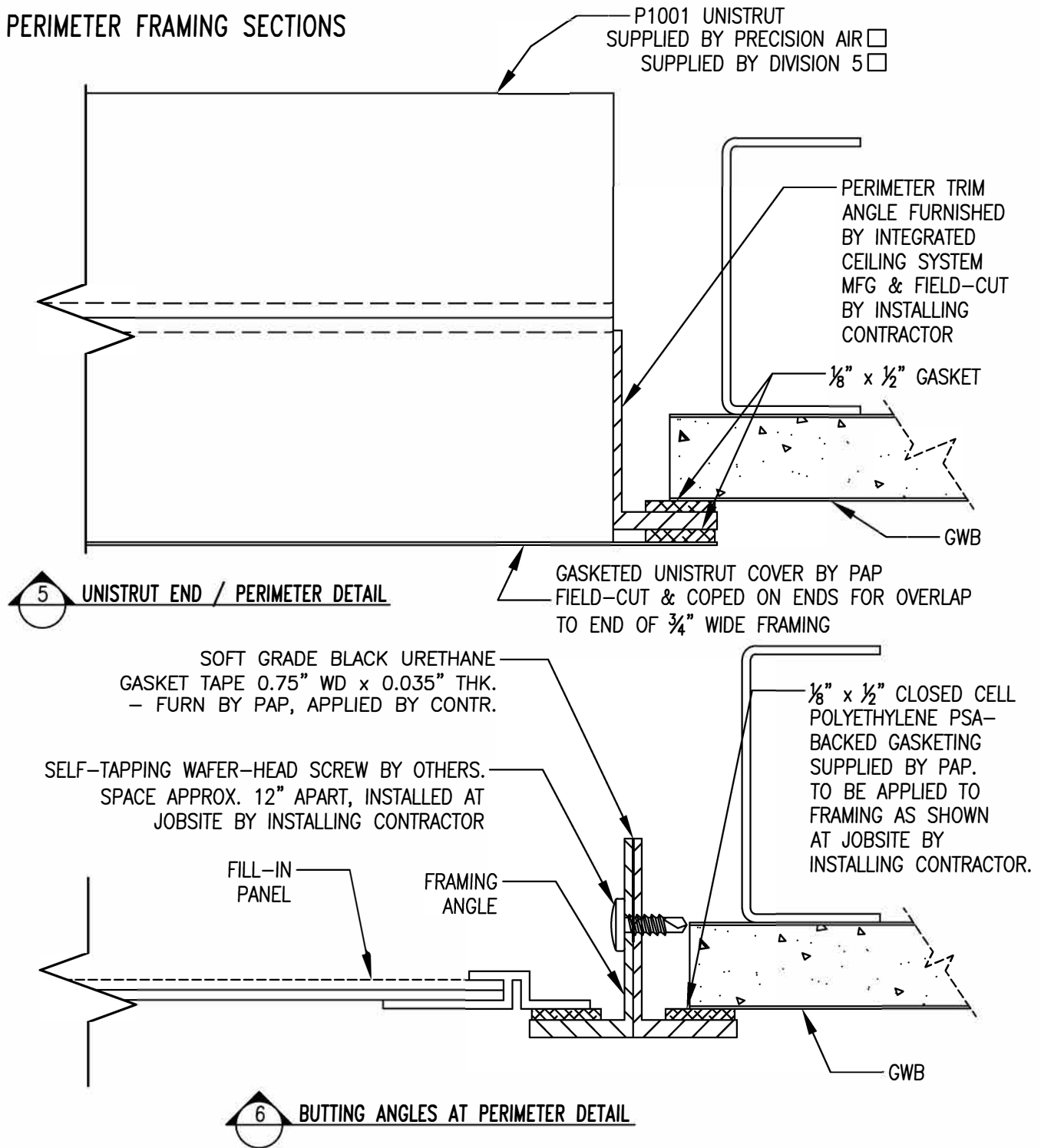


PHONE: 1-800-404-0931 [www.precisionairproducts.com](http://www.precisionairproducts.com)

THE ITEMS SHOWN ON THIS DRAWING MAY BE COVERED BY ONE OR MORE PATENTS OF PRECISION AIR PRODUCTS CO. THE DESIGN AND DRAWING ARE THE PROPERTY OF THE CORPORATION AND DUPLICATION IS NOT PERMITTED, EXCEPT WITH WRITTEN CONSENT FROM THE CORPORATION. DIMENSIONS SHOWN ARE SUBJECT TO NORMAL MANUFACTURING TOLERANCES. THIS DRAWING IS FOR SUBMITTAL PURPOSES ONLY AND SUBJECT TO REVISION.

# SURGICAIR® TRACK INTEGRATED CEILING SYSTEM

## PERIMETER FRAMING SECTIONS



FORM 5-026, EFF. 10/2018

JOB: \_\_\_\_\_  
ENGINEER: \_\_\_\_\_  
ARCHITECT: \_\_\_\_\_  
CONTRACTOR: \_\_\_\_\_



The O.R. AirCare Specialists

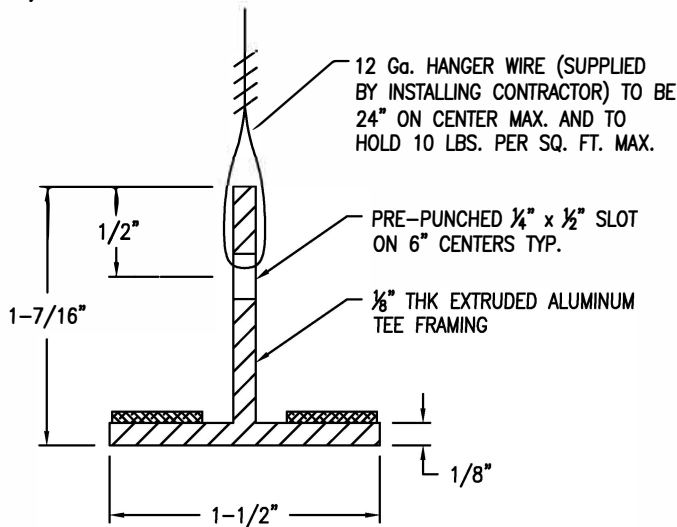
PHONE: 1-800-404-0931 www.precisionairproducts.com

THE ITEMS SHOWN ON THIS DRAWING MAY BE COVERED BY ONE OR MORE PATENTS OF PRECISION AIR PRODUCTS CO. THE DESIGN AND DRAWING ARE THE PROPERTY OF THE CORPORATION AND DUPLICATION IS NOT PERMITTED, EXCEPT WITH WRITTEN CONSENT FROM THE CORPORATION. DIMENSIONS SHOWN ARE SUBJECT TO NORMAL MANUFACTURING TOLERANCES. THIS DRAWING IS FOR SUBMITTAL PURPOSES ONLY AND SUBJECT TO REVISION.



# SURGICAIR<sup>®</sup> FLEX & SURGICAIR<sup>®</sup> TRACK INTEGRATED CEILING SYSTEM

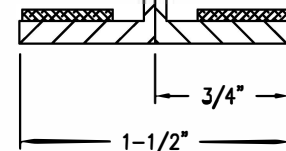
1-1/2" WIDE PROFILE SECTIONS



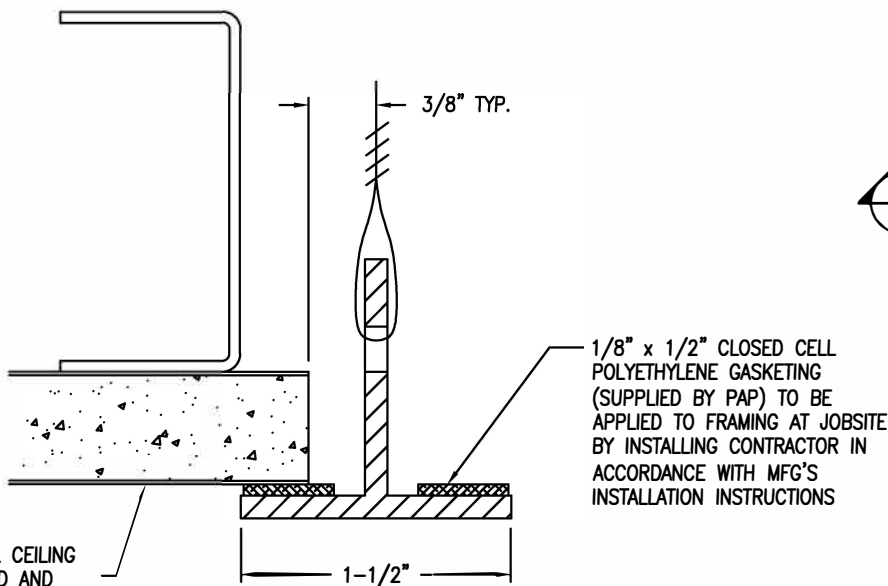
2 TYP. SECTION THRU TEE WIRE HANGER OPTION

WHITE CLOSED-CELL POLYETHYLENE GASKET TAPE 0.75" WD x 0.031" THK. - FURN BY PAP, APPLIED BY CONTR.

SELF-TAPPING #8 x 1/2" LG. WAFER-HEAD SCREW INSTALLED ON SITE, SPACED APPROX. 12" APART MAX. BY INSTALLING CONTRACTOR



3 SECTION AT BUTTING L's



4 SECTION AT FRAMING PERIMETER

FORM 5-132, EFF. 10/2018

JOB: \_\_\_\_\_  
ENGINEER: \_\_\_\_\_  
ARCHITECT: \_\_\_\_\_  
CONTRACTOR: \_\_\_\_\_



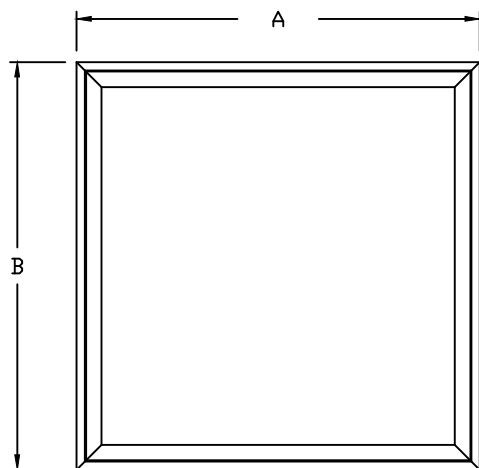
PHONE: 1-800-404-0931 www.precisionairproducts.com

THE ITEMS SHOWN ON THIS DRAWING MAY BE COVERED BY ONE OR MORE PATENTS OF PRECISION AIR PRODUCTS CO. THE DESIGN AND DRAWING ARE THE PROPERTY OF THE CORPORATION AND DUPLICATION IS NOT PERMITTED, EXCEPT WITH WRITTEN CONSENT FROM THE CORPORATION. DIMENSIONS SHOWN ARE SUBJECT TO NORMAL MANUFACTURING TOLERANCES. THIS DRAWING IS FOR SUBMITTAL PURPOSES ONLY AND SUBJECT TO REVISION.

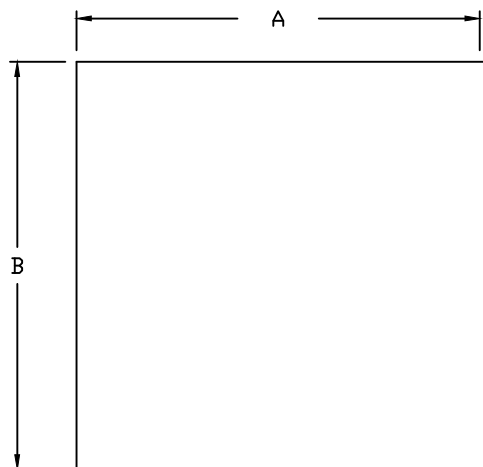


# FILL- IN PANELS WITH SOLID FACE

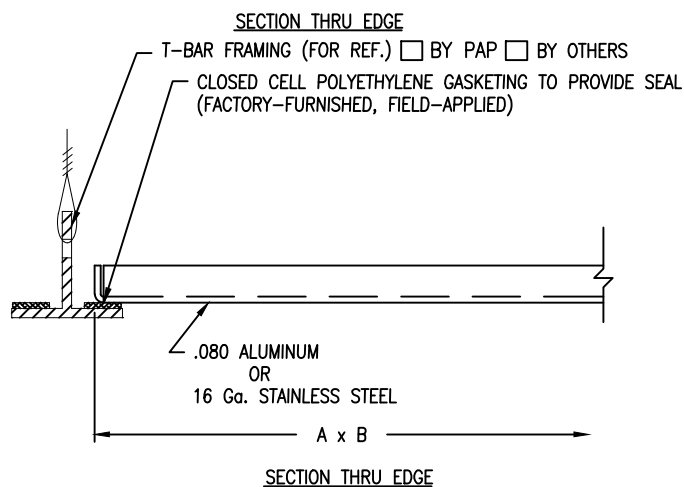
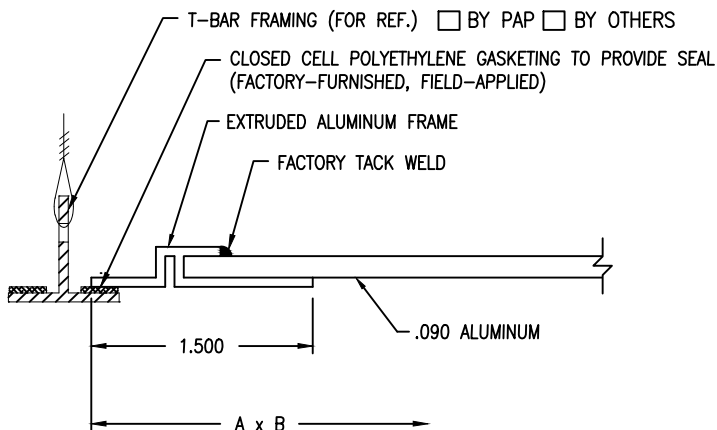
MODEL SFP



FRAMED STYLE



WRAP-AROUND STYLE



## NOTES:

1. INDICATE MATERIAL

- ☐ ALL ALUM.  
☐ ALL 304 S.S.

2. INDICATE FINISH TO MATCH DIFFUSERS:

- ☐ WHITE BAKED ENAMEL ☐ CLEAR ANODIZED ALUM.  
☐ #4 POLISHED S.S.

3. INDICATE FACEPLATE STYLE:

- ☐ FRAMED\* ☐ WRAP-AROUND  
 \* NOT OFFERED IN STAINLESS STEEL

MODEL	'A'	'B'	QNTY	MODEL	'A'	'B'	QNTY	MODEL	'A'	'B'	QNTY
SFP-1212	11.500	11.500		SFP-2424	23.625	23.625		SFP-3636	35.750	35.750	
SFP-1224	11.500	23.625		SFP-2436	23.625	35.750		SFP-3648	35.750	47.875	
SFP-1236	11.500	35.750		SFP-2448	23.625	47.875		SFP-3660	35.750	60.000	
SFP-1248	11.500	47.875		SFP-2460	23.625	60.000		SFP-3672	35.750	72.125	
SFP-1260	11.500	60.000		SFP-2472	23.625	72.125		SFP-4848	47.875	47.875	
SFP-1272	11.500	72.125									

FORM 5-130, EFF. 10/2018

JOB: \_\_\_\_\_  
 ENGINEER: \_\_\_\_\_  
 ARCHITECT: \_\_\_\_\_  
 CONTRACTOR: \_\_\_\_\_



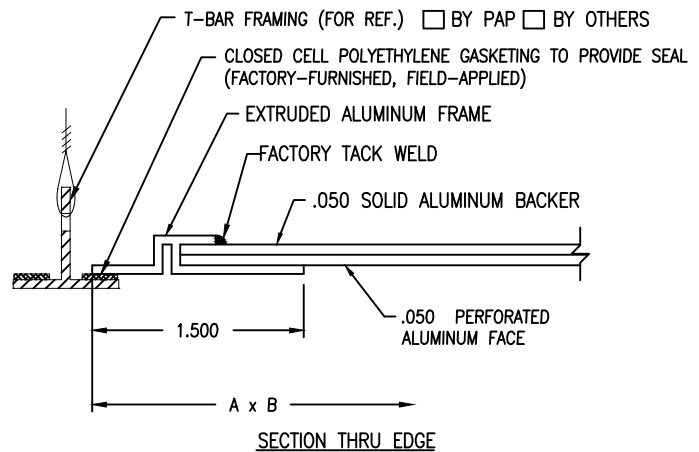
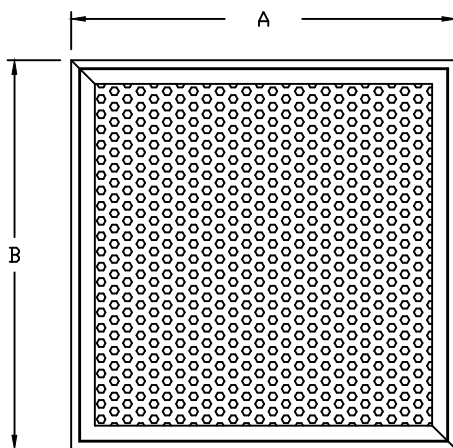
PHONE: 1-800-404-0931 www.precisionairproducts.com

THE ITEMS SHOWN ON THIS DRAWING MAY BE COVERED BY ONE OR MORE PATENTS OF PRECISION AIR PRODUCTS CO. THE DESIGN AND DRAWING ARE THE PROPERTY OF THE CORPORATION AND DUPLICATION IS NOT PERMITTED, EXCEPT WITH WRITTEN CONSENT FROM THE CORPORATION. DIMENSIONS SHOWN ARE SUBJECT TO NORMAL MANUFACTURING TOLERANCES. THIS DRAWING IS FOR SUBMITTAL PURPOSES ONLY AND SUBJECT TO REVISION.

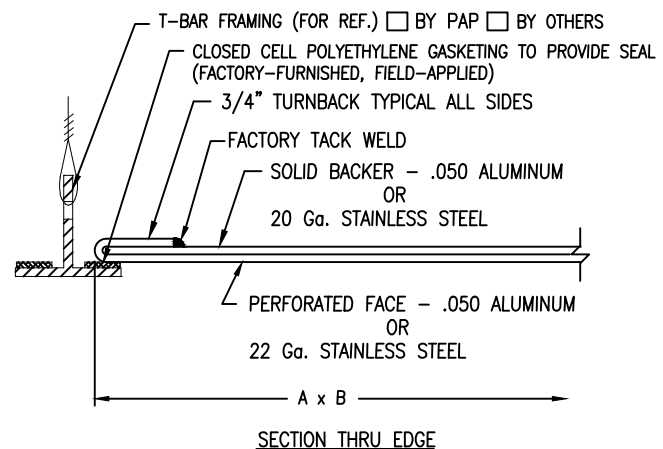
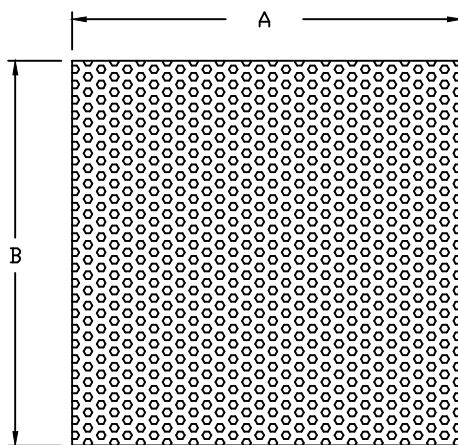
# FILL-IN PANELS

## WITH PERFORATED FACE

### MODEL PFP



### FRAMED STYLE, TO MATCH DIFFUSERS WITH FRAMED STYLE FACEPLATE



### WRAP-AROUND STYLE, TO MATCH DIFFUSERS WITH WRAP AROUND STYLE FACEPLATE

#### NOTES:

1. INDICATE MATERIAL  
☐ ALL ALUM.  
☐ ALL 304 S.S.
2. INDICATE FINISH TO MATCH DIFFUSERS:  
☐ WHITE BAKED ENAMEL ☐ CLEAR ANODIZED  
☐ #4 POLISHED S.S.
3. INDICATE FACEPLATE STYLE:  
☐ FRAMED\* ☐ WRAP-AROUND  
 \* NOT OFFERED IN STAINLESS STEEL
4. INDICATE PERFORATION PATTERN REQUIRED:  
☐ 16% OPEN TO MATCH A-SERIES DIFFUSERS  
☐ 23% OPEN TO MATCH B-SERIES DIFFUSERS  
☐ 33% OPEN TO MATCH C-D-E SERIES DIFFUSERS

MODEL	'A'	'B'	QNTY	MODEL	'A'	'B'	QNTY	MODEL	'A'	'B'	QNTY
PFP-1212	11.500	11.500		PFP-2424	23.625	23.625		PFP-3636	35.750	35.750	
PFP-1224	11.500	23.625		PFP-2436	23.625	35.750		PFP-3648	35.750	47.875	
PFP-1236	11.500	35.750		PFP-2448	23.625	47.875		PFP-3660	35.750	60.000	
PFP-1248	11.500	47.875		PFP-2460	23.625	60.000		PFP-3672	35.750	72.125	
PFP-1260	11.500	60.000		PFP-2472	23.625	72.125		PFP-4848	47.875	47.875	
PFP-1272	11.500	72.125									

FORM 5-131, EFF. 10/2018

JOB: \_\_\_\_\_  
 ENGINEER: \_\_\_\_\_  
 ARCHITECT: \_\_\_\_\_  
 CONTRACTOR: \_\_\_\_\_

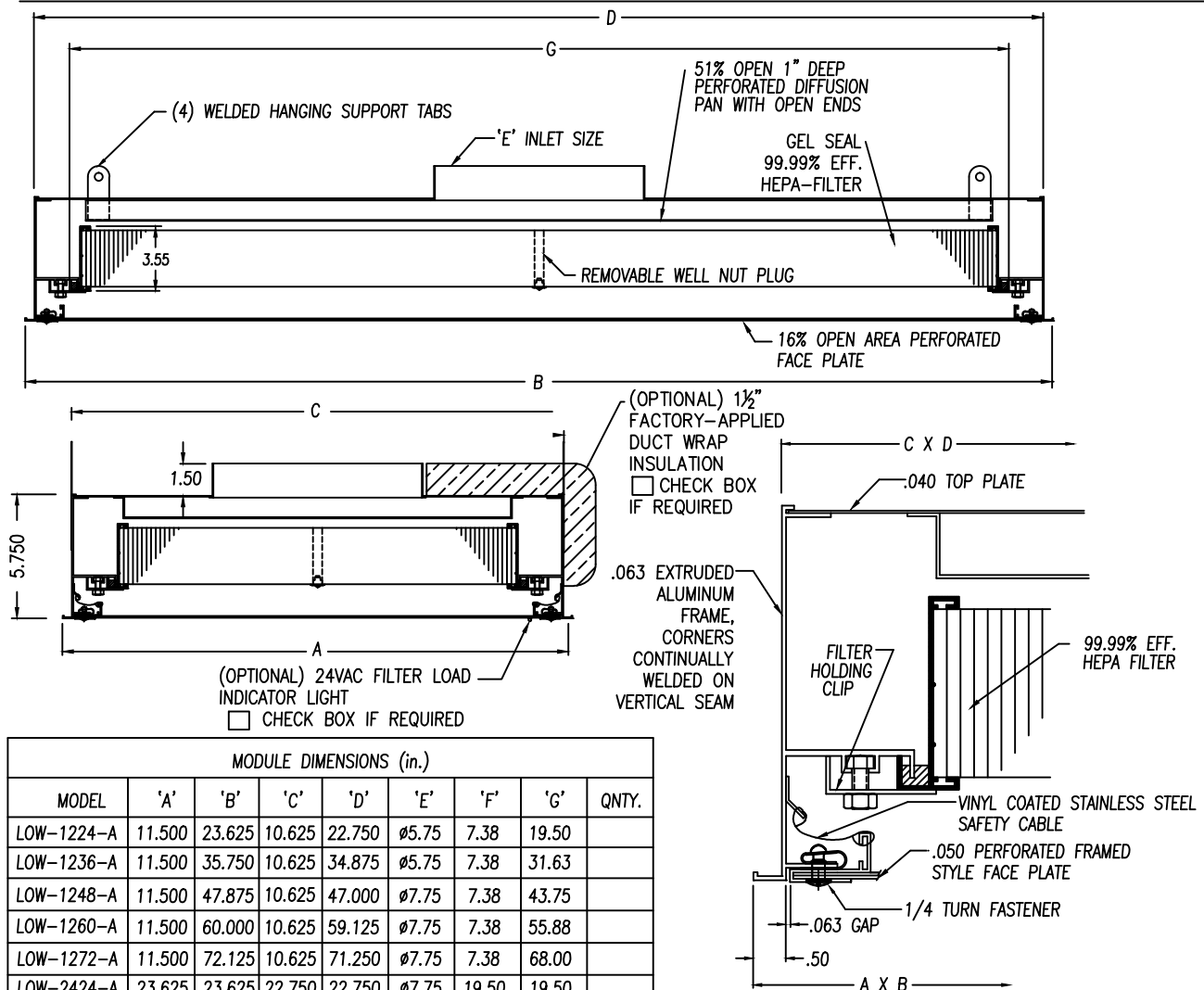


PHONE: 1-800-404-0931 www.precisionairproducts.com

THE ITEMS SHOWN ON THIS DRAWING MAY BE COVERED BY ONE OR MORE PATENTS OF PRECISION AIR PRODUCTS CO. THE DESIGN AND DRAWING ARE THE PROPERTY OF THE CORPORATION AND DUPLICATION IS NOT PERMITTED, EXCEPT WITH WRITTEN CONSENT FROM THE CORPORATION. DIMENSIONS SHOWN ARE SUBJECT TO NORMAL MANUFACTURING TOLERANCES. THIS DRAWING IS FOR SUBMITTAL PURPOSES ONLY AND SUBJECT TO REVISION.

# LOW PROFILE HEPA-VENT

MODEL: LOW-A (20-40 CFM/FT<sup>2</sup>)



MODULE DIMENSIONS (in.)								
MODEL	'A'	'B'	'C'	'D'	'E'	'F'	'G'	QNTY.
LOW-1224-A	11.500	23.625	10.625	22.750	Ø5.75	7.38	19.50	
LOW-1236-A	11.500	35.750	10.625	34.875	Ø5.75	7.38	31.63	
LOW-1248-A	11.500	47.875	10.625	47.000	Ø7.75	7.38	43.75	
LOW-1260-A	11.500	60.000	10.625	59.125	Ø7.75	7.38	55.88	
LOW-1272-A	11.500	72.125	10.625	71.250	Ø7.75	7.38	68.00	
LOW-2424-A	23.625	23.625	22.750	22.750	Ø7.75	19.50	19.50	
LOW-2436-A	23.625	35.750	22.750	34.875	Ø7.75	19.50	31.63	
LOW-2448-A	23.625	47.875	22.750	47.000	Ø7.75	19.50	43.75	
LOW-2460-A	23.625	60.000	22.750	59.125	Ø9.75	19.50	55.88	
LOW-2472-A	23.625	72.125	22.750	71.250	Ø11.75	19.50	68.00	
LOW-3636-A	35.750	35.750	34.875	34.875	Ø9.75	31.63	31.63	
LOW-3648-A	35.750	47.875	34.875	47.000	Ø11.75	31.63	43.75	
LOW-3660-A	35.750	60.000	34.875	59.125	Ø11.75	31.63	55.88	

PACKAGING NOTE: FACEPLATE & INLET COLLAR PROTECTED WITH SELF-ADHESIVE PLASTIC MATERIAL.

## NOTES:

- INDICATE FACEPLATE STYLE:  
☐ F = FRAMED \*    ☐ W = WRAP-AROUND  
 \* NOT OFFERED IN STAINLESS STEEL
- INDICATE MATERIAL / FINISH:  
☐ 0 = ALUMINUM / WHITE BAKED ENAMEL  
☐ 1 = ALUMINUM / CLEAR ANODIZED  
☐ 2 = ALUMINUM / CLEAR ANODIZED WITH 304 SST FACEPLATE / No. 4 POLISH  
☐ 4 = ALUMINUM DIFFUSER / WHITE BAKED ENAMEL WITH 304 SST FACEPLATE / No. 4 POLISH
- ALL DIMENSIONS SHOWN IN INCHES.

FORM 4-229, EFFECTIVE 10/2018

JOB: \_\_\_\_\_  
 ENGINEER: \_\_\_\_\_  
 ARCHITECT: \_\_\_\_\_  
 CONTRACTOR: \_\_\_\_\_



PHONE: 1-800-404-0931    www.precisionairproducts.com

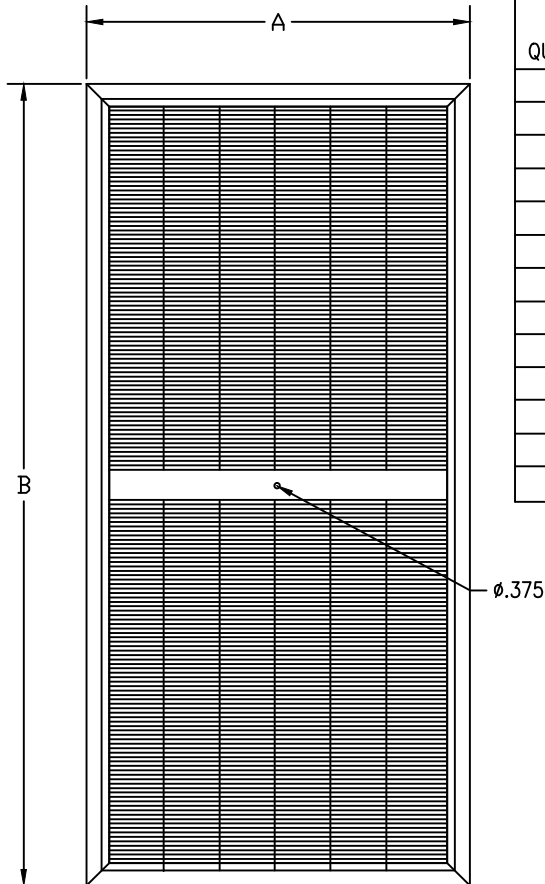
THE ITEMS SHOWN ON THIS DRAWING MAY BE COVERED BY ONE OR MORE PATENTS OF PRECISION AIR PRODUCTS CO. THE DESIGN AND DRAWING ARE THE PROPERTY OF THE CORPORATION AND DUPLICATION IS NOT PERMITTED, EXCEPT WITH WRITTEN CONSENT FROM THE CORPORATION. DIMENSIONS SHOWN ARE SUBJECT TO NORMAL MANUFACTURING TOLERANCES. THIS DRAWING IS FOR SUBMITTAL PURPOSES ONLY AND SUBJECT TO REVISION.

# HEPA-FILTERS

FOR USE WITH HEP-DS-A, HEP-DS-B &  
LOW-A UNITS

MODEL GEL-L  
MODEL GEL-M  
GEL SEAL FILTER

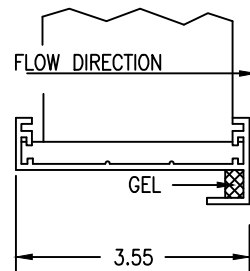
LOW FLOW - 53mm MEDIA  
MEDIUM FLOW - 70mm MEDIA



QUANTITY	NOMINAL DIFFUSER SIZE	FILTER SIZE		ACTIVE MEDIA AREA W/ CENTER BOARD	ACTIVE MEDIA AREA W/O CENTER BOARD
		A	B		
	1 x 2	7.375	19.500	0.57 ft <sup>2</sup>	0.61 ft <sup>2</sup>
	1 x 3	7.375	31.625	1.00 ft <sup>2</sup>	1.04 ft <sup>2</sup>
	1 x 4	7.375	43.750	1.43 ft <sup>2</sup>	**
	1 x 5	7.375	55.875	1.86 ft <sup>2</sup>	**
	1 x 6	7.375	68.000	2.29 ft <sup>2</sup>	**
	2 x 2	19.500	19.500	1.91 ft <sup>2</sup>	2.06 ft <sup>2</sup>
	2 x 3	19.500	31.625	3.36 ft <sup>2</sup>	3.51 ft <sup>2</sup>
	2 x 4	19.500	43.750	4.81 ft <sup>2</sup>	**
	2 x 5	19.500	55.875	6.26 ft <sup>2</sup>	**
	2 x 6	19.500	68.000	7.71 ft <sup>2</sup>	**
	3 x 3	31.625	31.625	5.72 ft <sup>2</sup>	**
	3 x 4	31.625	43.750	8.19 ft <sup>2</sup>	**
	3 x 5	31.625	55.875	10.67 ft <sup>2</sup>	**

\* CENTER BOARD REQUIRED ON ALL DIFFUSERS WITH TOP INLETS. DIFFUSERS WITH SIDE OR END INLETS DO NOT REQUIRE CENTER BOARDS EXCEPT FOR SIZES AS NOTED ABOVE.

\*\* NOT AVAILABLE WITHOUT CENTER BOARD.



## NOTES:

1. FILTER MEDIA: UNIFORM NON-SHED MICRO-GLASS
2. SEPARATOR MAT'L: HOT MELT SPACED AT 44mm INTERVALS
3. FRAME MAT'L: 6063-T5 ANODIZED ALUMINUM (CENTER DIVIDER PROVIDED ON SIZES LARGER THAN 4' LONG. OPTIONAL ON LOW-A MODEL OR HEP-DS-A/B w/ SIDE/END INLETS.)
4. SEALANT MAT'L: FIRE-RETARDANT SELF-EXTINGUISHING POLYURETHANE, LOW-OUTGASSING
5. SEAL: NON-FLOWING URETHANE GEL IN CHANNEL ON DOWNSTREAM SIDE OF FLANGE

## FILTER SPECIFICATIONS:

EFFICIENCY: 99.99% @ 0.3 MICRON

✓	PLEAT DEPTH	RESISTANCE
	53mm	0.45" w.g. @ 100 FPM
	70mm	0.34" w.g. @ 100 FPM

FORM 4-235 EFF. 10/2018

JOB: \_\_\_\_\_  
ENGINEER: \_\_\_\_\_  
ARCHITECT: \_\_\_\_\_  
CONTRACTOR: \_\_\_\_\_



PHONE: 1-800-404-0931 www.precisionairproducts.com

THE ITEMS SHOWN ON THIS DRAWING MAY BE COVERED BY ONE OR MORE PATENTS OF PRECISION AIR PRODUCTS CO. THE DESIGN AND DRAWING ARE THE PROPERTY OF THE CORPORATION AND DUPLICATION IS NOT PERMITTED, EXCEPT WITH WRITTEN CONSENT FROM THE CORPORATION. DIMENSIONS SHOWN ARE SUBJECT TO NORMAL MANUFACTURING TOLERANCES. THIS DRAWING IS FOR SUBMITTAL PURPOSES ONLY AND SUBJECT TO REVISION.